

**TECHNICAL SPECIFICATIONS**

**1) DESIGN CONDITIONS**

- 1.1 BASIC WIND SPEED : 35 m/s (BS 5649) SUPERSEDED BY BS EN 40-3-1
- 1.2 10 MINUTES MEAN WIND VELOCITY : 20.6 m/s (BS EN 40-3-1) EQUIVALENT TO BS 5649 3-SEC GUST BASIC WIND SPEED OF 35 m/s

- 1.3 TOTAL TRAFFIC LIGHTS & LUMINAIRES SAIL AREA : 0.69 m<sup>2</sup>
- 1.4 TOTAL WEIGHT OF TRAFFIC LIGHTS & LUMINAIRES : 82 KG

**2) STANDARDS**

- 2.1 POLE DESIGN : BS EN 40-3-1 & BS EN 40-3-3 EN 12767 CLASS 0 BS EN 10025 S275JR
- 2.2 MATERIAL : BS EN 1011-2
- 2.3 WELDING (ELECTRIC ARC WELDING) : BS EN ISO 1461 / BS 729
- 2.4 GALVANIZING : DIMENSIONAL VERIFICATION, GALVANIZING THICKNESS, MATERIAL STRENGTH & THICKNESS TYPE TEST: BS EN 40-3-2

**3) TESTING PROCEDURES**

- 4) QUALITY CONTROL PROCEDURES : THE SUPPLIER / MANUFACTURER AND GALVANIZER SHALL BE ISO 9001 : 2015 ACCREDITED

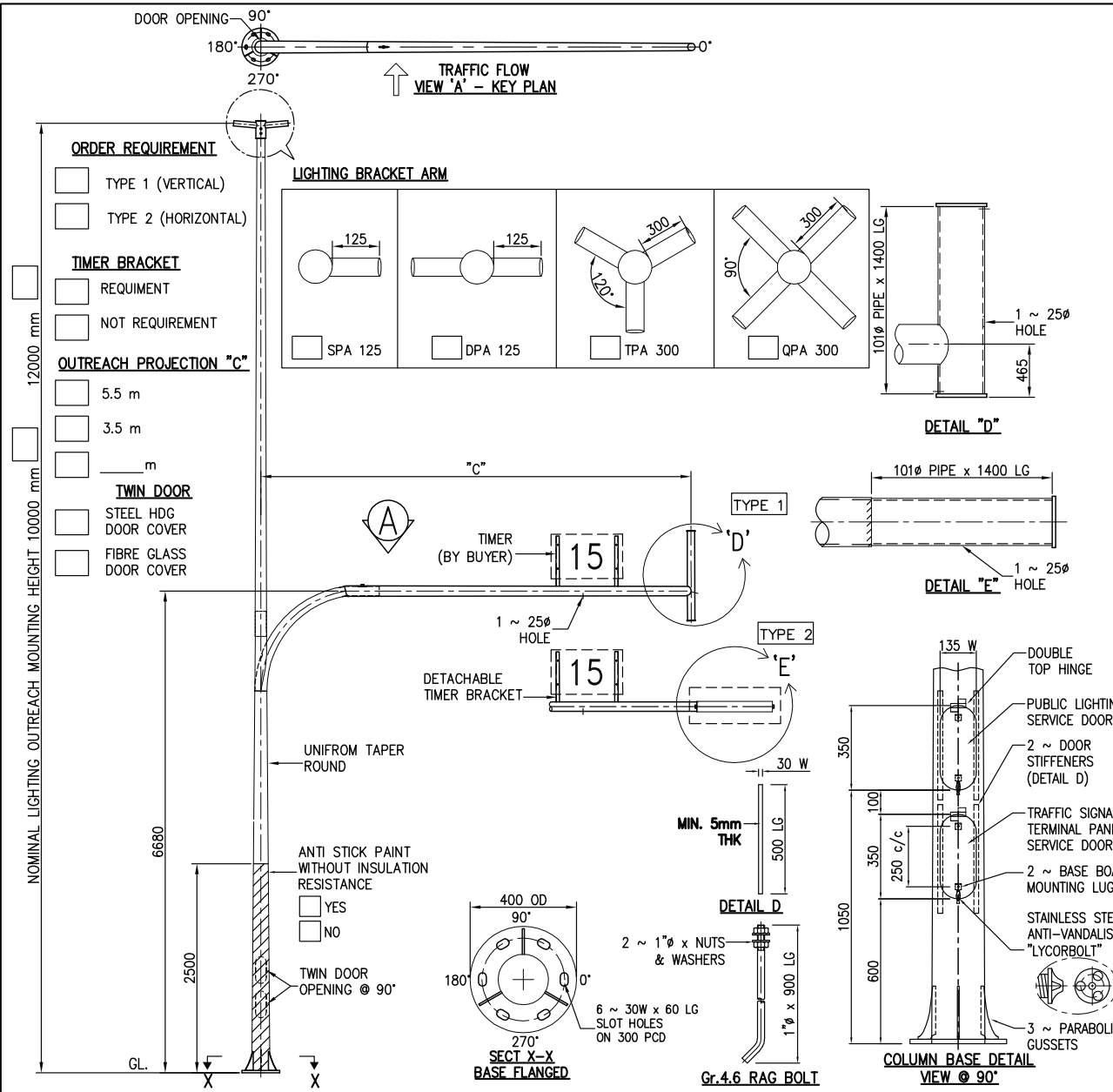
**MANUFACTURER'S COMPLIANCE**

- 1) LOCALLY MANUFACTURED PRODUCTS : -MANUFACTURER'S DECLARATION THAT POLE SECTIONS AND COMPONENTS ARE "MADE IN MALAYSIA" IN COMPLIANCE TO MOF "SURAT PEKELILING PERBENDAHARAAN BIL.7 TAHUN 2002". -HOT ROLLED STEEL COIL WITH LOCAL STEEL MILL CERTIFICATES.
- 2) MANUFACTURING AND HOT DIP GALVANIZING : -PREFERRED IN-HOUSE MANUFACTURING WITH HOT DIP GALVANIZING PROCESSES.
- 3) PROVIDE COMPULSORY TESTING AT MANUFACTURER'S FACTORY : -TYPE TEST TO BS EN 40-3-2 -GALVANIZING TEST -MATERIAL TEST -WELDING TEST BY DYE PENETRANT
- 4) CERTIFICATION : -JKR / ISO / SIRIM
- 5) REGISTRATION : -MITI / IKRAM / MOF / CIDB
- 6) TRACK RECORD : -EVIDENCE OF MIN. 10 YEARS MANUFACTURING & SUPPLY TRACK RECORDS.
- 7) PE ENDORSEMENT : -PE ENDORSEMENT MANDATORY FOR ALL POLE DESIGN CALCULATIONS & DRAWINGS FOR SUBMISSION.
- 8) DESIGN CALCULATION : -DESIGN CALCULATIONS INCORPORATING UNFACTORED GROUND REACTIONS SHALL BE VALIDATED, REVIEWED AND APPROVED.

\* UTILITY INNOVATION APPLICATION NO : UI 2012001805

CUSTOMER APPROVED DRAWING FOR MANUFACTURE

(Co. stamp, sign & date)



© LMSB, All Rights Reserved This printout is copyright and shall not be reproduced without written permission from Lysaght Marketing Sdn Bhd. The Company reserves the right to make alterations to design without notice.				PRELIMINARY DRAWING FOR TENDER PURPOSES ONLY		CLIENT : PROJECT:		TITLE : 10.0 / 12.0 m PT - JOINT USE MAST ARM Ø		DWG./REF. NO. JUMA-PT120F-0	
WARRANTY TUNG LSK 07.11.18				DRAWN : ZILLA CHD		DATE: 20/03/06		SCALE : NTS		SHEET 1 of 1 REV I	
REVISIONS				LYSAGHT MARKETING SDN BHD		CO. NO.: 102382-M		This drawing and the information contained herein is the sole property of LYSAGHT MARKETING SDN BHD, is strictly confidential and must not be used or disclosed without the written consent of LYSAGHT MARKETING SDN BHD. CO. NO. :102382-M		DIMENSIONS IN mm UNLESS STATED	
BY CHD DATE				ALL DIMS ARE SUBJECT TO MANUFACTURING TOLERANCES						SHEET SIZE A4	

**TECHNICAL SPECIFICATIONS**

**1) DESIGN CONDITIONS**

- 1.1 BASIC WIND SPEED : 35 m/s (BS 5649) SUPERSEDED BY BS EN 40-3-1
- 1.2 10 MINUTES MEAN WIND VELOCITY : 20.6 m/s (BS EN 40-3-1) EQUIVALENT TO BS 5649 3-SEC GUST BASIC WIND SPEED OF 35 m/s

- 1.3 TOTAL TRAFFIC LIGHTS & LUMINAIRES SAIL AREA : 0.56 m<sup>2</sup>
- 1.4 TOTAL WEIGHT OF TRAFFIC LIGHTS & LUMINAIRES : 56 KG

**2) STANDARDS**

- 2.1 POLE DESIGN : BS EN 40-3-1 & BS EN 40-3-3 EN 12767 CLASS 0 BS EN 10025 S275JR
- 2.2 MATERIAL : BS EN 1011-2
- 2.3 WELDING (ELECTRIC ARC WELDING) : BS EN ISO 1461 / BS 729
- 2.4 GALVANIZING : DIMENSIONAL VERIFICATION, GALVANIZING THICKNESS, MATERIAL STRENGTH & THICKNESS TYPE TEST: BS EN 40-3-2

**3) TESTING PROCEDURES**

- 4) QUALITY CONTROL PROCEDURES : THE SUPPLIER / MANUFACTURER AND GALVANIZER SHALL BE ISO 9001 : 2015 ACCREDITED

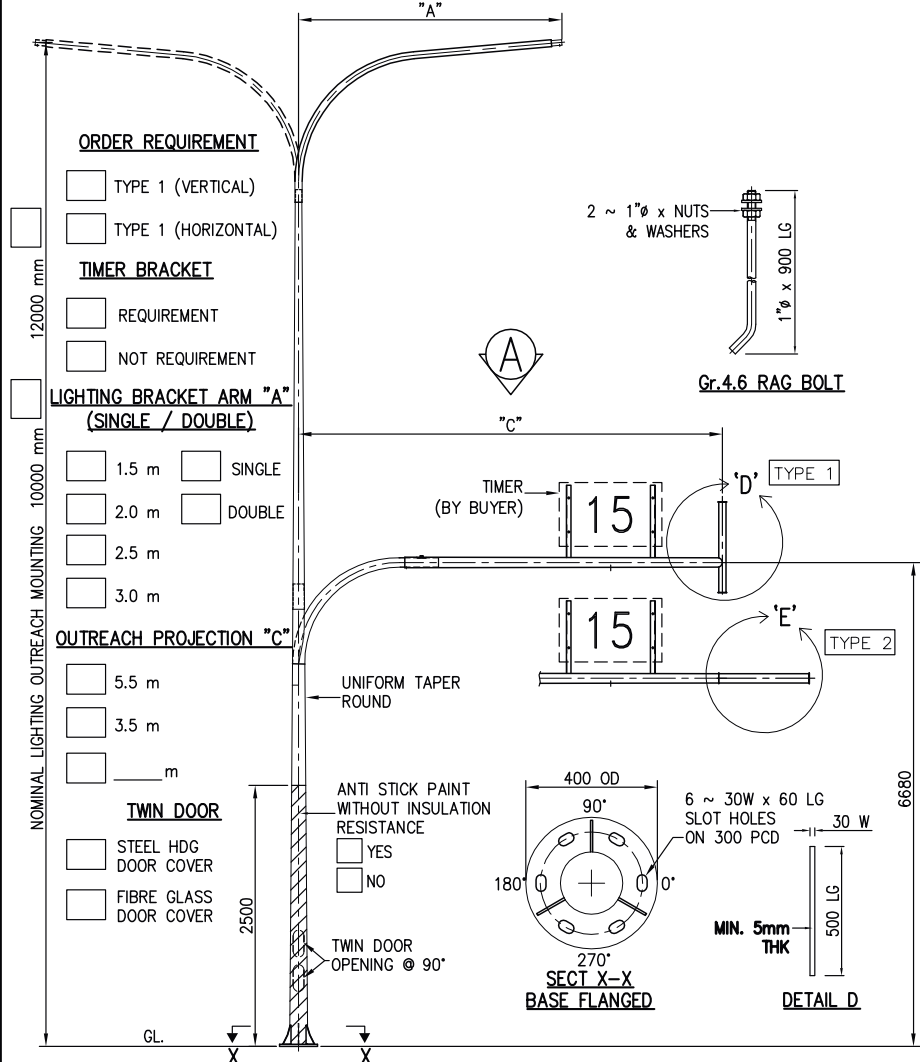
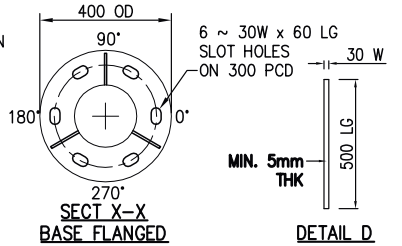
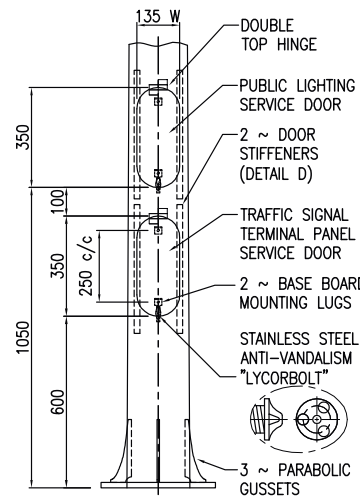
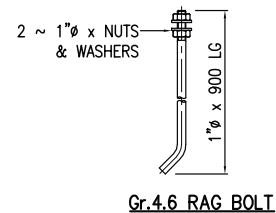
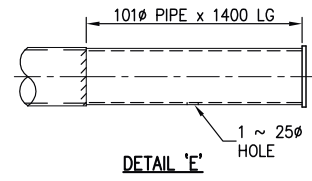
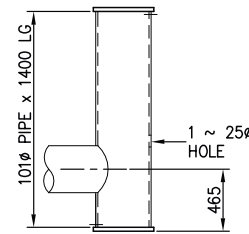
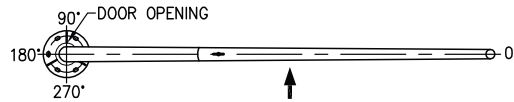
**MANUFACTURER'S COMPLIANCE**

- 1) LOCALLY MANUFACTURED PRODUCTS : -MANUFACTURER'S DECLARATION THAT POLE SECTIONS AND COMPONENTS ARE "MADE IN MALAYSIA" IN COMPLIANCE TO MOF "SURAT PEKELILING PERBENDAHARAAN BIL.7 TAHUN 2002". -HOT ROLLED STEEL COIL WITH LOCAL STEEL MILL CERTIFICATES.
- 2) MANUFACTURING AND HOT DIP GALVANIZING : -PREFERRED IN-HOUSE MANUFACTURING WITH HOT DIP GALVANIZING PROCESSES.
- 3) PROVIDE COMPULSORY TESTING AT MANUFACTURER'S FACTORY : -TYPE TEST TO BS EN 40-3-2 -GALVANIZING TEST -MATERIAL TEST -WELDING TEST BY DYE PENETRANT
- 4) CERTIFICATION : -JKR / ISO / SIRIM
- 5) REGISTRATION : -MITI / IKRAM / MOF / CIDB
- 6) TRACK RECORD : -EVIDENCE OF MIN. 10 YEARS MANUFACTURING & SUPPLY TRACK RECORDS.
- 7) PE ENDORSEMENT : -PE ENDORSEMENT MANDATORY FOR ALL POLE DESIGN CALCULATIONS & DRAWINGS FOR SUBMISSION.
- 8) DESIGN CALCULATION : -DESIGN CALCULATIONS INCORPORATING UNFACTORED GROUND REACTIONS SHALL BE VALIDATED, REVIEWED AND APPROVED.

\* UTILITY INNOVATION APPLICATION NO : UI 2012001805

CUSTOMER APPROVED DRAWING FOR MANUFACTURE

(Co. stamp, sign & date)



**ORDER REQUIREMENT**

- TYPE 1 (VERTICAL)
- TYPE 1 (HORIZONTAL)

**TIMER BRACKET**

- REQUIREMENT
- NOT REQUIREMENT

**LIGHTING BRACKET ARM "A" (SINGLE / DOUBLE)**

- 1.5 m  SINGLE
- 2.0 m  DOUBLE
- 2.5 m
- 3.0 m

**OUTREACH PROJECTION "C"**

- 5.5 m
- 3.5 m
- m

**TWIN DOOR**

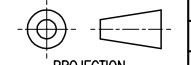
- STEEL HDG DOOR COVER
- FIBRE GLASS DOOR COVER

- ANTI STICK PAINT WITHOUT INSULATION RESISTANCE
- YES
- NO

TWIN DOOR OPENING @ 90°

© LMSB, All Rights Reserved  
This printout is copyright and shall not be reproduced without written permission from Lysaght Marketing Sdn Bhd. The Company reserves the right to make alterations to design without notice.

PRELIMINARY DRAWING FOR TENDER PURPOSES ONLY



PROJECTION ALL DIMS ARE SUBJECT TO MANUFACTURING TOLERANCES

CLIENT : PROJECT : DRAWN : ZILLA CHD DATE: 20/03/06

LYSAGHT MARKETING SDN BHD CO. NO.: 102382-M

TITLE : 10.0 m / 12.0 m SLG - JOINT USE MAST ARM Ø SCALE : NTS SHEET 1 of 1 REV H

DWG./REF. NO. JUMA-S120F-0

H	WARRANTY	TUNG	LSK	07.11.18
REV	DETAILS	BY	CHD	DATE

This drawing and the information contained herein is the sole property of LYSAGHT MARKETING SDN BHD, is strictly confidential and must not be used or disclosed without the written consent of LYSAGHT MARKETING SDN BHD. CO. NO.: 102382-M

DIMENSIONS IN mm UNLESS STATED SHEET SIZE A4

**TECHNICAL SPECIFICATIONS**

**1) DESIGN CONDITIONS**

- 1.1 BASIC WIND SPEED : 35 m/s (BS 5649) SUPERSEDED BY BS EN 40-3-1
- 1.2 10 MINUTES MEAN WIND VELOCITY : 20.6 m/s (BS EN 40-3-1) EQUIVALENT TO BS 5649 3-SEC GUST BASIC WIND SPEED OF 35 m/s

- 1.3 TOTAL TRAFFIC LIGHTS SAIL AREA : 0.3 m<sup>2</sup>
- 1.4 TOTAL WEIGHT OF TRAFFIC LIGHTS : 30 KG

**2) STANDARDS**

- 2.1 POLE DESIGN : BS EN 40-3-1 & BS EN 40-3-3
- 2.2 MATERIAL : EN 12767 CLASS 0
- 2.3 WELDING (ELECTRIC ARC WELDING) : BS EN 10025 S275JR
- 2.4 GALVANIZING : BS EN 1011-2

**3) TESTING PROCEDURES**

- : DIMENSIONAL VERIFICATION, GALVANIZING THICKNESS, MATERIAL STRENGTH & THICKNESS TYPE TEST: BS EN 40-3-2

**4) QUALITY CONTROL PROCEDURES**

- : THE SUPPLIER / MANUFACTURER AND GALVANIZER SHALL BE ISO 9001 : 2015 ACCREDITED

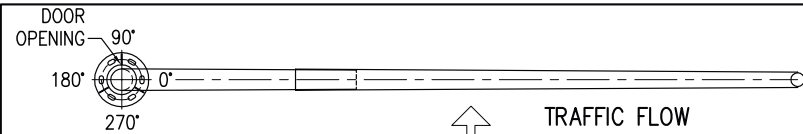
**MANUFACTURER'S COMPLIANCE**

- 1) LOCALLY MANUFACTURED PRODUCTS : -MANUFACTURER'S DECLARATION THAT POLE SECTIONS AND COMPONENTS ARE "MADE IN MALAYSIA" IN COMPLIANCE TO MOF "SURAT PEKELILING PERBENDAHARAAN BIL.7 TAHUN 2002". -HOT ROLLED STEEL COIL WITH LOCAL STEEL MILL CERTIFICATES.
- 2) MANUFACTURING AND HOT DIP GALVANIZING : -PREFERRED IN-HOUSE MANUFACTURING WITH HOT DIP GALVANIZING PROCESSES.
- 3) PROVIDE COMPULSORY TESTING AT MANUFACTURER'S FACTORY : -TYPE TEST TO BS EN 40-3-2 -GALVANIZING TEST -MATERIAL TEST -WELDING TEST BY DYE PENETRANT
- 4) CERTIFICATION : -JKR / ISO / SIRIM
- 5) REGISTRATION : -MITI / IKRAM / MOF / CIDB
- 6) TRACK RECORD : -EVIDENCE OF MIN. 10 YEARS MANUFACTURING & SUPPLY TRACK RECORDS.
- 7) PE ENDORSEMENT : -PE ENDORSEMENT MANDATORY FOR ALL POLE DESIGN CALCULATIONS & DRAWINGS FOR SUBMISSION.
- 8) DESIGN CALCULATION : -DESIGN CALCULATIONS INCORPORATING UNFACTORED GROUND REACTIONS SHALL BE VALIDATED, REVIEWED AND APPROVED.

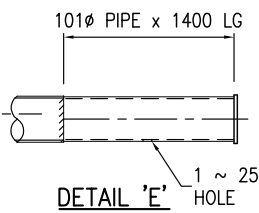
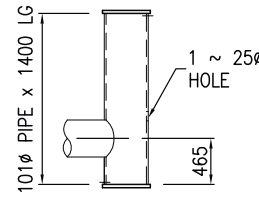
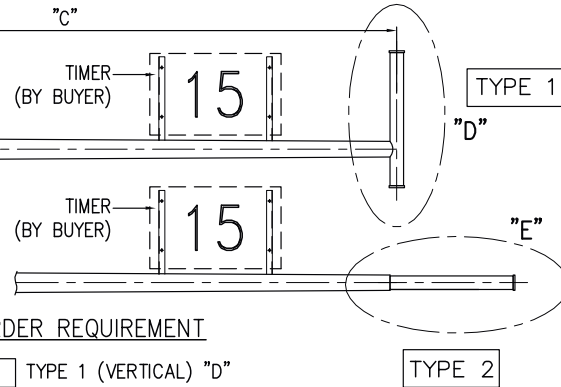
\* UTILITY INNOVATION APPLICATION NO : UI 2012001805

CUSTOMER APPROVED DRAWING FOR MANUFACTURE

(Co. stamp, sign & date)



↑ TRAFFIC FLOW  
VIEW 'A' - KEY PLAN



**ORDER REQUIREMENT**

- TYPE 1 (VERTICAL) "D"
- TYPE 2 (HORIZONTAL) "E"

**TIMER BRACKET**

- REQUIRED
- NOT REQUIRED

**OUTREACH PROJECTION "C"**

- 5.5 m
- 3.5 m
- \_\_\_\_\_ m

**DOOR "F"**

- STEEL HDG DOOR COVER
- FIBRE DOOR COVER

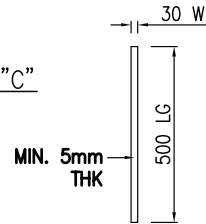
UNIFORM TAPERED ROUND

ANTI STICK PAINT WITHOUT INSULATION RESISTANCE

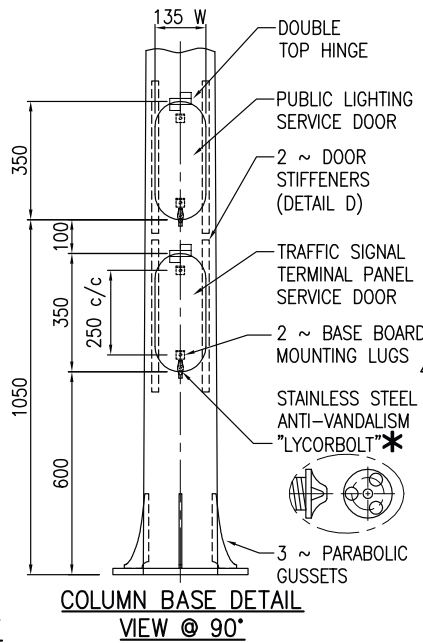
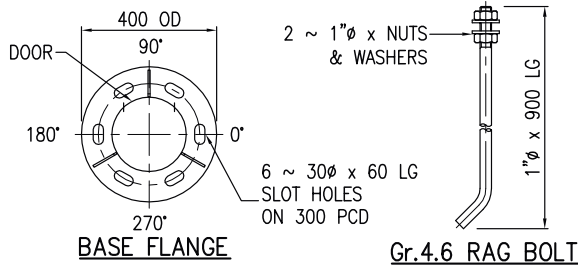
- YES
- NO

TWIN DOOR "F" OPENING @ 90°

NOMINAL MOUNTING HEIGHT 6680 mm



DETAIL D



COLUMN BASE DETAIL  
VIEW @ 90°

REV	AS NOTED ABOVE	TUNG	LSK	05.11.18
	DETAILS	BY	CHD	DATE

© LMSB, All Rights Reserved  
This printout is copyright and shall not be reproduced without written permission from Lysaght Marketing Sdn Bhd. The Company reserves the right to make alterations to design without notice.

PRELIMINARY DRAWING FOR TENDER PURPOSES ONLY  
PROJECTION  
ALL DIMS ARE SUBJECT TO MANUFACTURING TOLERANCES

CLIENT :  
PROJECT :  
DRAWN : LEE  
CHD : *Lee*  
DATE : 17.12.09  
LYSAGHT MARKETING SDN BHD  
CO. NO. : 102382-M

TITLE : 6.5 m MT. HT. ....PROJECTION  
FIXED TYPE TRAFFIC SIGNAL MAST ARM ♂  
SCALE : 1 : 50  
SHEET 1 of 1  
REV E

DWG./REF. NO.  
**M23801-194**  
DIMENSIONS IN mm UNLESS STATED  
SHEET SIZE A4

This drawing and the information contained herein is the sole property of LYSAGHT MARKETING SDN BHD, is strictly confidential and must not be used or disclosed without the written consent of LYSAGHT MARKETING SDN BHD. CO. NO. : 102382-M

**TECHNICAL SPECIFICATIONS**

**1) DESIGN CONDITIONS**

- 1.1 BASIC WIND SPEED : 35 m/s (BS 5649) SUPERSEDED BY BS EN 40-3-1
- 1.2 10 MINUTES MEAN WIND VELOCITY : 20.6 m/s (BS EN 40-3-1) EQUIVALENT TO BS 5649 3-SEC GUST BASIC WIND SPEED OF 35 m/s
- 1.3 TOTAL TRAFFIC LIGHTS SAIL AREA : 0.3 m<sup>2</sup>
- 1.4 TOTAL WEIGHT OF TRAFFIC LIGHTS : 30 KG

**2) STANDARDS**

- 2.1 POLE DESIGN : BS EN 40-3-1 & BS EN 40-3-3 EN 12767 CLASS 0
- 2.2 MATERIAL : BS EN 10025 S275JR
- 2.3 WELDING (ELECTRIC ARC WELDING) : BS EN 1011-2
- 2.4 GALVANIZING : BS EN ISO 1461 / BS 729

**3) TESTING PROCEDURES**

- : DIMENSIONAL VERIFICATION, GALVANIZING THICKNESS, MATERIAL STRENGTH & THICKNESS
- TYPE TEST: BS EN 40-3-2

**4) QUALITY CONTROL PROCEDURES**

- : THE SUPPLIER / MANUFACTURER AND GALVANIZER SHALL BE ISO 9001 : 2015 ACCREDITED

**MANUFACTURER'S COMPLIANCE**

**1) LOCALLY MANUFACTURED PRODUCTS**

- : -MANUFACTURER'S DECLARATION THAT POLE SECTIONS AND COMPONENTS ARE "MADE IN MALAYSIA" IN COMPLIANCE TO MOF "SURAT PEKELILING PERBENDAHARAAN BIL.7 TAHUN 2002".
- HOT ROLLED STEEL COIL WITH LOCAL STEEL MILL CERTIFICATES.

**2) MANUFACTURING AND HOT DIP GALVANIZING**

- : -PREFERRED IN-HOUSE MANUFACTURING WITH HOT DIP GALVANIZING PROCESSES.

**3) PROVIDE COMPULSORY TESTING AT MANUFACTURER'S FACTORY**

- : -TYPE TEST TO BS EN 40-3-2
- GALVANIZING TEST
- MATERIAL TEST
- WELDING TEST BY DYE PENETRANT

**4) CERTIFICATION**

- : -JKR / ISO / SIRIM

**5) REGISTRATION**

- : -MITI / IKRAM / MOF / CIDB

**6) TRACK RECORD**

- : -EVIDENCE OF MIN. 10 YEARS MANUFACTURING & SUPPLY TRACK RECORDS.
- : -PE ENDORSEMENT MANDATORY FOR ALL POLE DESIGN CALCULATIONS & DRAWINGS FOR SUBMISSION.

**7) PE ENDORSEMENT**

- : -DESIGN CALCULATIONS INCORPORATING UNFACTORED GROUND REACTIONS SHALL BE VALIDATED, REVIEWED AND APPROVED.

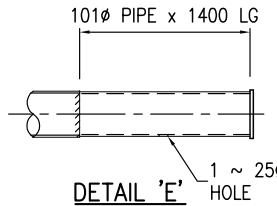
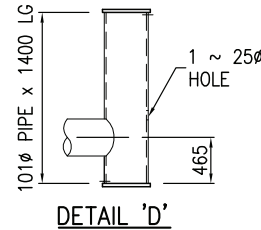
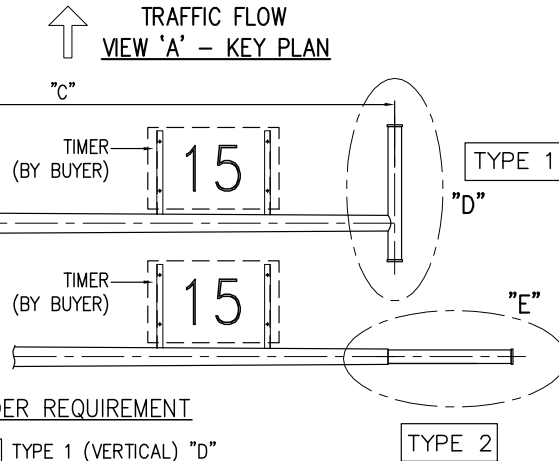
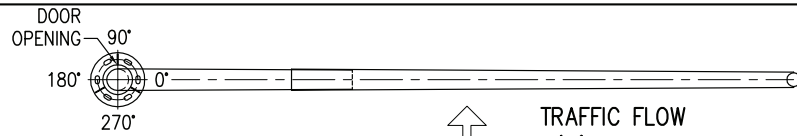
**B) DESIGN CALCULATION**



\*UTILITY INNOVATION APPLICATION NO : UI 2012001805

CUSTOMER APPROVED DRAWING FOR MANUFACTURE

(Co. stamp, sign & date)



**ORDER REQUIREMENT**

- TYPE 1 (VERTICAL) "D"
- TYPE 2 (HORIZONTAL) "E"

**TIMER BRACKET**

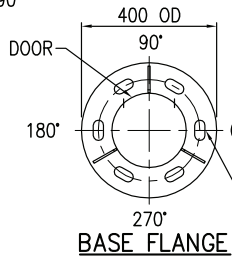
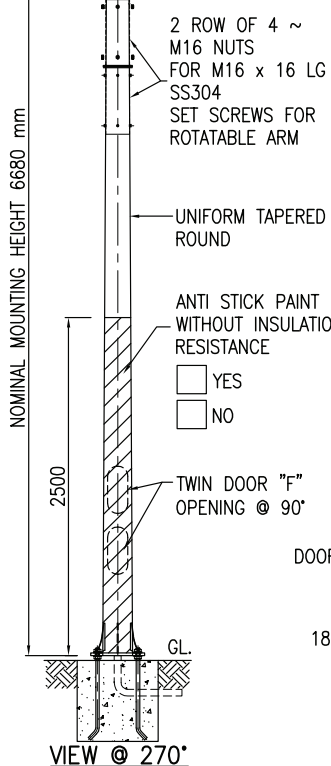
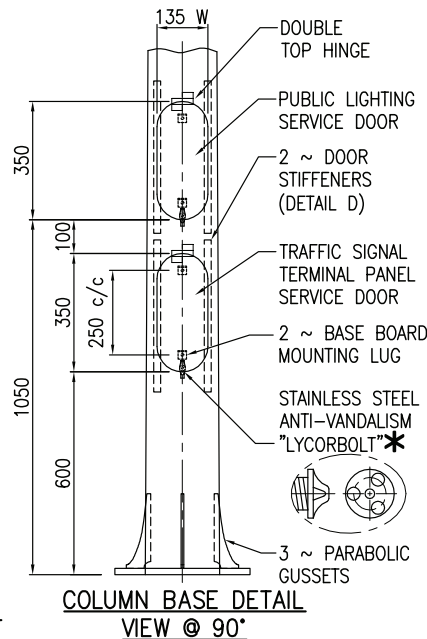
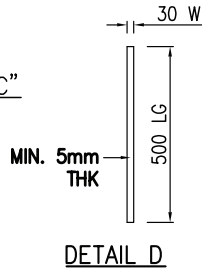
- REQUIRED
- NOT REQUIRED

**OUTREACH PROJECTION "C"**

- 5.5 m
- 3.5 m
- \_\_\_\_\_ m

**DOOR "F"**

- STEEL HDG DOOR COVER
- FIBRE DOOR COVER



© LMSB, All Rights Reserved This printout is copyright and shall not be reproduced without written permission from Lysaght Marketing Sdn Bhd. The Company reserves the right to make alterations to design without notice.	PRELIMINARY DRAWING FOR TENDER PURPOSES ONLY	CLIENT : PROJECT:	TITLE : <b>6.5 m MT. HT. ....PROJECTION ROTATABLE TRAFFIC SIGNAL MAST ARM ♂</b>	DWG./REF. NO. <b>M23801-230-1</b>
B WARRANTY TUNG LSK 07.11.18		DRAWN : SooN CHD DATE: 12.05.15	SCALE : 1 : 50 SHEET 1 of 1 REV B	DIMENSIONS IN mm UNLESS STATED
REV DETAILS BY CHD DATE	ALL DIMS ARE SUBJECT TO MANUFACTURING TOLERANCES		SHEET SIZE A4	

© LMSB, All Rights Reserved  
This printout is copyright and shall not be reproduced without written permission from Lysaght Marketing Sdn Bhd. The Company reserves the right to make alterations to design without notice.

CLIENT :  
PROJECT:  
DRAWN : SooN CHD DATE: 12.05.15  
**LYSAGHT MARKETING SDN BHD**  
CO. NO.: 102382-M

TITLE :  
**6.5 m MT. HT. ....PROJECTION ROTATABLE TRAFFIC SIGNAL MAST ARM ♂**

DWG./REF. NO.  
**M23801-230-1**

SCALE : 1 : 50 SHEET 1 of 1 REV B

This drawing and the information contained herein is the sole property of LYSAGHT MARKETING SDN BHD, is strictly confidential and must not be used or disclosed without the written consent of LYSAGHT MARKETING SDN BHD. CO. NO.: 102382-M

DIMENSIONS IN mm UNLESS STATED

SHEET SIZE A4