

TECHNICAL SPECIFICATIONS

- 1) DESIGN CONDITIONS
- 1.1 BASIC WIND SPEED : 35 m/s (BS 5649) SUPERSEDED BY BS EN 40-3-1
 - 1.2 10 MINUTES MEAN WIND VELOCITY : 20.6 m/s (BS EN 40-3-1) EQUIVALENT TO BS 5649 3-SEC GUST BASIC WIND SPEED OF 35 m/s
 - 1.3 TOTAL LUMINAIRES SAIL AREA : 0.5 m² D
 - 1.4 TOTAL WEIGHT OF LUMINAIRES : 50 KG
- 2) STANDARDS
- 2.1 POLE DESIGN : BS EN 40-3-1 & BS EN 40-3-3 EN 12767 CLASS 0
 - 2.2 MATERIAL : BS EN 10025 S275JR
 - 2.3 WELDING (ELECTRIC ARC WELDING) : BS EN 1011-2
 - 2.4 GALVANIZING : BS EN ISO 1461 / BS 729
- 3) TESTING PROCEDURES : DIMENSIONAL VERIFICATION, GALVANIZING THICKNESS, MATERIAL STRENGTH & THICKNESS TYPE TEST: BS EN 40-3-2
- 4) QUALITY CONTROL PROCEDURES : THE SUPPLIER / MANUFACTURER AND GALVANIZER SHALL BE ISO 9001 : 2015 ACCREDITED

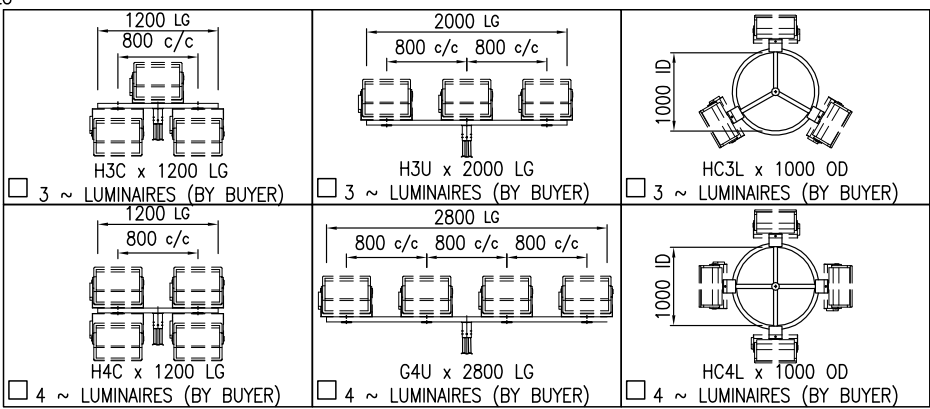
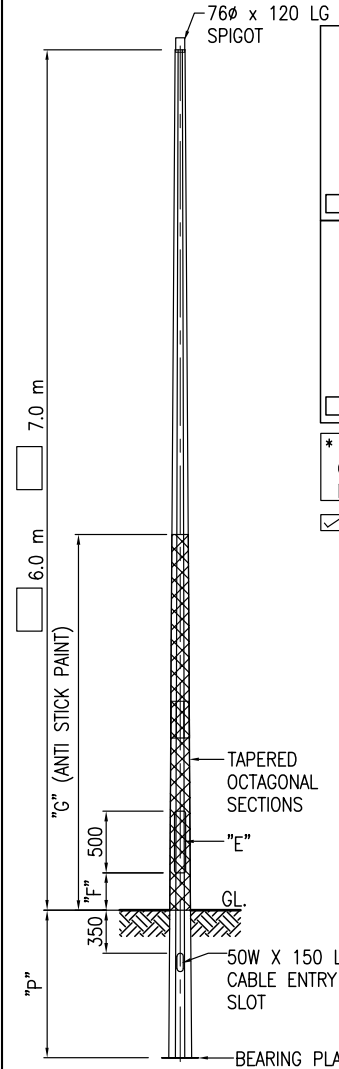
MANUFACTURER'S COMPLIANCE

- 1) LOCALLY MANUFACTURED PRODUCTS : -MANUFACTURER'S DECLARATION THAT POLE SECTIONS AND COMPONENTS ARE "MADE IN MALAYSIA" IN COMPLIANCE TO MOF "SURAT PEKELILING PERBENDAHARAAN BIL.7 TAHUN 2002".
-HOT ROLLED STEEL COIL WITH LOCAL STEEL MILL CERTIFICATES.
- 2) MANUFACTURING AND HOT DIP GALVANIZING : -PREFERRED IN-HOUSE MANUFACTURING WITH HOT DIP GALVANIZING PROCESSES.
- 3) PROVIDE COMPULSORY TESTING AT MANUFACTURER'S FACTORY : -TYPE TEST TO BS EN 40-3-2
-GALVANIZING TEST
-MATERIAL TEST
-WELDING TEST BY DYE PENETRANT
- 4) CERTIFICATION : -JKR / ISO / SIRIM
- 5) REGISTRATION : -MITI / IKRAM / MOF / CIDB
- 6) TRACK RECORD : -EVIDENCE OF MIN. 10 YEARS MANUFACTURING & SUPPLY TRACK RECORDS.
- 7) PE ENDORSEMENT : -PE ENDORSEMENT MANDATORY FOR ALL POLE DESIGN CALCULATIONS & DRAWINGS FOR SUBMISSION.
- 8) DESIGN CALCULATION : -DESIGN CALCULATIONS INCORPORATING UNFACTORED GROUND REACTIONS SHALL BE VALIDATED, REVIEWED AND APPROVED.

* UTILITY INNOVATION APPLICATION NO : UI 2012001805

CUSTOMER APPROVED DRAWING
FOR MANUFACTURE

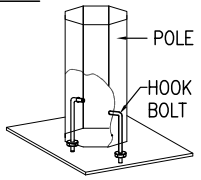
(Co. stamp, sign & date)



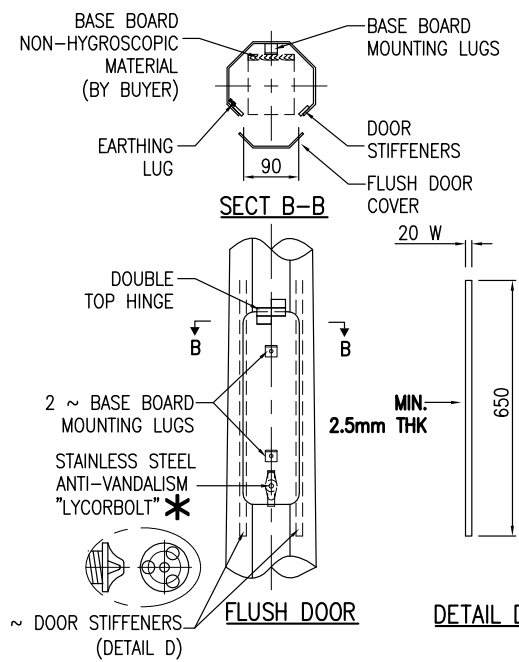
* NOTE : UNLESS SPECIFIED BY CUSTOMER, STANDARD LUMINAIRE MOUNTING HOLE IS 18φ

TICK WHERE APPLICABLE

- "E" DOOR TYPE D
- STEEL
 - FIBRE WITH _____ WORDING
- "F" DOOR FROM GROUND
- 500 mm
 - _____ mm
- "G" ANTI STICK PAINT
- FROM GROUND
- 2.5 m
 - _____ m
 - NOT REQUIRED



**ISOMETRIC VIEW
BASE SECTION**



DETAIL D

| PLANTING DEPTH "P" | |
|--------------------|------------|
| POLE HEIGHT | DEPTH (MM) |
| 6.0 m | 1100 |
| 7.0 m | 1200 |

| | | | | |
|-----|----------------|------|-----|----------|
| D | AS NOTED ABOVE | TUNG | LSK | 13.12.18 |
| C | WARRANTY | THOO | LSK | 13.06.18 |
| B | WARRANTY | THOO | LSK | 01.08.16 |
| A | TYPE OF POLE | SOON | LSK | 13.06.16 |
| REV | DETAILS | BY | CHD | DATE |

© LMSB, All Rights Reserved. This printout is copyright and shall not be reproduced without written permission from Lysaght Marketing Sdn Bhd. The Company reserves the right to make alterations to design without notice.

PRELIMINARY DRAWING FOR TENDER PURPOSES ONLY

PROJECTION

ALL DIMS ARE SUBJECT TO MANUFACTURING TOLERANCES

CLIENT : _____

PROJECT : _____

DRAWN : SHA CHD: *Shaharudin bin Hassan* DATE: 10.01.12

LYSAGHT MARKETING SDN BHD
CO. NO.: 102382-M

TITLE : **6m ~ 7m VERTICAL LIGHTING COLUMN (PLANTED V-TYPE)**

SCALE : 1 : 45 SHEET 2 of 2 REV A B C D

This drawing and the information contained herein is the sole property of LYSAGHT MARKETING SDN BHD, is strictly confidential and must not be used or disclosed without the written consent of LYSAGHT MARKETING SDN BHD. CO. NO.: 102382-M

DWG./REF. NO. **V060PA ~ V070PA**

DIMENSIONS IN mm UNLESS STATED

SHEET SIZE **A4**

TECHNICAL SPECIFICATIONS

- 1) DESIGN CONDITIONS
 - 1.1 BASIC WIND SPEED : 35 m/s (BS 5649) SUPERSEDED BY BS EN 40-3-1
 - 1.2 10 MINUTES MEAN WIND VELOCITY : 20.6 m/s (BS EN 40-3-1) EQUIVALENT TO BS 5649 3-SEC GUST BASIC WIND SPEED OF 35 m/s
 - 1.3 TOTAL LUMINAIRES SAIL AREA : 0.5 m²
 - 1.4 TOTAL WEIGHT OF LUMINAIRES : 50 KG D
- 2) STANDARDS
 - 2.1 POLE DESIGN : BS EN 40-3-1 & BS EN 40-3-3 EN 12767 CLASS 0 BS EN 10025 S275JR
 - 2.2 MATERIAL : BS EN 1011-2
 - 2.3 WELDING (ELECTRIC ARC WELDING) : BS EN ISO 1461 / BS 729
 - 2.4 GALVANIZING : BS EN ISO 1461 / BS 729
- 3) TESTING PROCEDURES : DIMENSIONAL VERIFICATION, GALVANIZING THICKNESS, MATERIAL STRENGTH & THICKNESS TYPE TEST: BS EN 40-3-2
- 4) QUALITY CONTROL PROCEDURES : THE SUPPLIER / MANUFACTURER AND GALVANIZER SHALL BE ISO 9001 : 2015 ACCREDITED

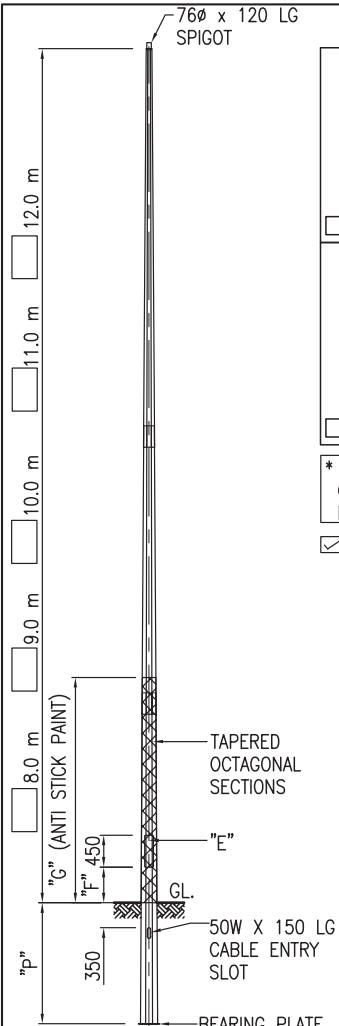
MANUFACTURER'S COMPLIANCE

- 1) LOCALLY MANUFACTURED PRODUCTS : -MANUFACTURER'S DECLARATION THAT POLE SECTIONS AND COMPONENTS ARE "MADE IN MALAYSIA" IN COMPLIANCE TO MOF "SURAT PEKELILING PERBENDAHARAAN BIL.7 TAHUN 2002".
-HOT ROLLED STEEL COIL WITH LOCAL STEEL MILL CERTIFICATES.
- 2) MANUFACTURING AND HOT DIP GALVANIZING : -PREFERRED IN-HOUSE MANUFACTURING WITH HOT DIP GALVANIZING PROCESSES.
- 3) PROVIDE COMPULSORY TESTING AT MANUFACTURER'S FACTORY : -TYPE TEST TO BS EN 40-3-2
-GALVANIZING TEST
-MATERIAL TEST
-WELDING TEST BY DYE PENETRANT
- 4) CERTIFICATION : -JKR / ISO / SIRIM
- 5) REGISTRATION : -MITI / IKRAM / MOF / CIDB
- 6) TRACK RECORD : -EVIDENCE OF MIN. 10 YEARS MANUFACTURING & SUPPLY TRACK RECORDS.
- 7) PE ENDORSEMENT : -PE ENDORSEMENT MANDATORY FOR ALL POLE DESIGN CALCULATIONS & DRAWINGS FOR SUBMISSION.
- 8) DESIGN CALCULATION : -DESIGN CALCULATIONS INCORPORATING UNFACTORED GROUND REACTIONS SHALL BE VALIDATED, REVIEWED AND APPROVED.

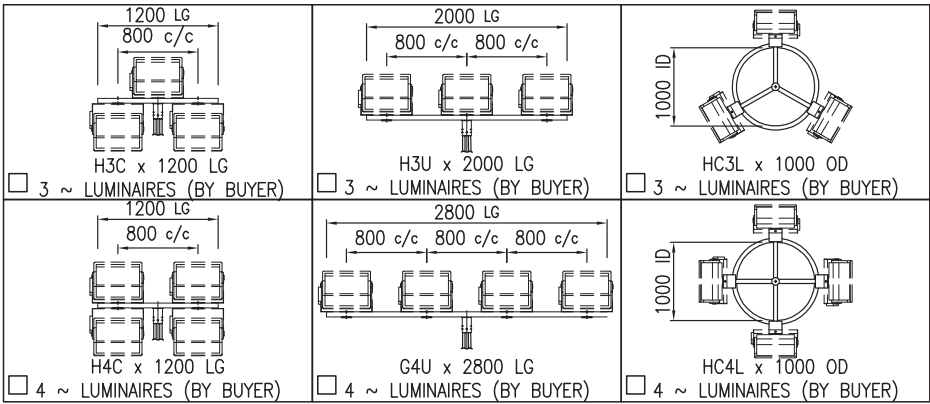
* UTILITY INNOVATION APPLICATION NO : UI 2012001805

CUSTOMER APPROVED DRAWING
FOR MANUFACTURE

(Co. stamp, sign & date)



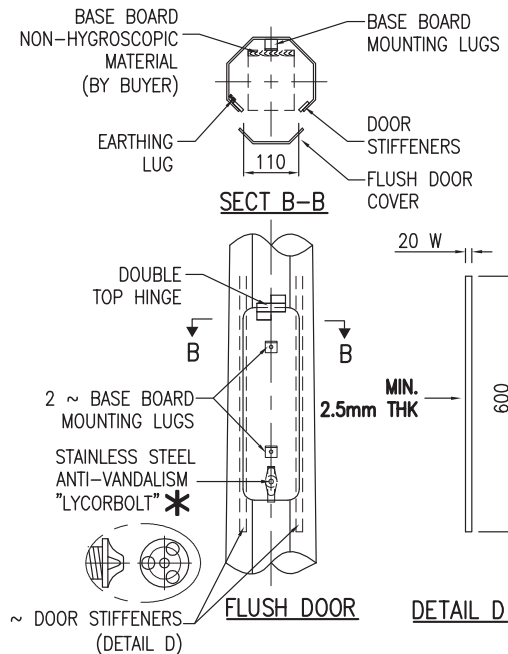
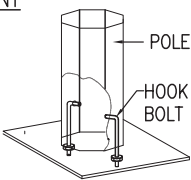
| PLANTED DEPTH "P" | |
|-------------------|------------|
| POLE HEIGHT | DEPTH (MM) |
| 8.0 m | 1300 |
| 9.0 m | 1400 |
| 10.0 m | 1500 |
| 11.0 m | 1600 |
| 12.0 m | 1700 |



* NOTE : UNLESS SPECIFIED BY CUSTOMER, STANDARD LUMINAIRE MOUNTING HOLE IS 18φ

TICK WHERE APPLICABLE

- "E" DOOR TYPE D
- STEEL
 - FIBRE WITH _____ WORDING
- "F" DOOR FROM GROUND
- 500 mm
 - _____ mm
- "G" ANTI STICK PAINT
- FROM GROUND
- 2.5 m
 - _____ m
 - NOT REQUIRED



| | | | | |
|-----|----------------|------|-----|----------|
| D | AS NOTED ABOVE | TUNG | LSK | 13.12.18 |
| C | WARRANTY | THOO | LSK | 13.06.18 |
| B | WARRANTY | THOO | LSK | 01.08.16 |
| A | TYPE OF POLE | SOON | LSK | 13.06.16 |
| REV | DETAILS | BY | CHD | DATE |

© LMSB, All Rights Reserved. This printout is copyright and shall not be reproduced without written permission from Lysaght Marketing Sdn Bhd. The Company reserves the right to make alterations to design without notice.

PRELIMINARY DRAWING FOR TENDER PURPOSES ONLY

PROJECTION

ALL DIMS ARE SUBJECT TO MANUFACTURING TOLERANCES

CLIENT : _____

PROJECT : _____

DRAWN : SHA CHD : _____ DATE: 10.01.12

LYSAGHT MARKETING SDN BHD
CO. NO.: 102382-M

TITLE : 8m ~ 12m VERTICAL LIGHTING COLUMN (PLANTED V-TYPE)

SCALE : 1 : 75 SHEET 2 of 3 REV A B C D

This drawing and the information contained herein is the sole property of LYSAGHT MARKETING SDN BHD, is strictly confidential and must not be used or disclosed without the written consent of LYSAGHT MARKETING SDN BHD. CO. NO.: 102382-M

DWG./REF. NO. V080PA ~ V120PA

DIMENSIONS IN mm UNLESS STATED

SHEET SIZE A4