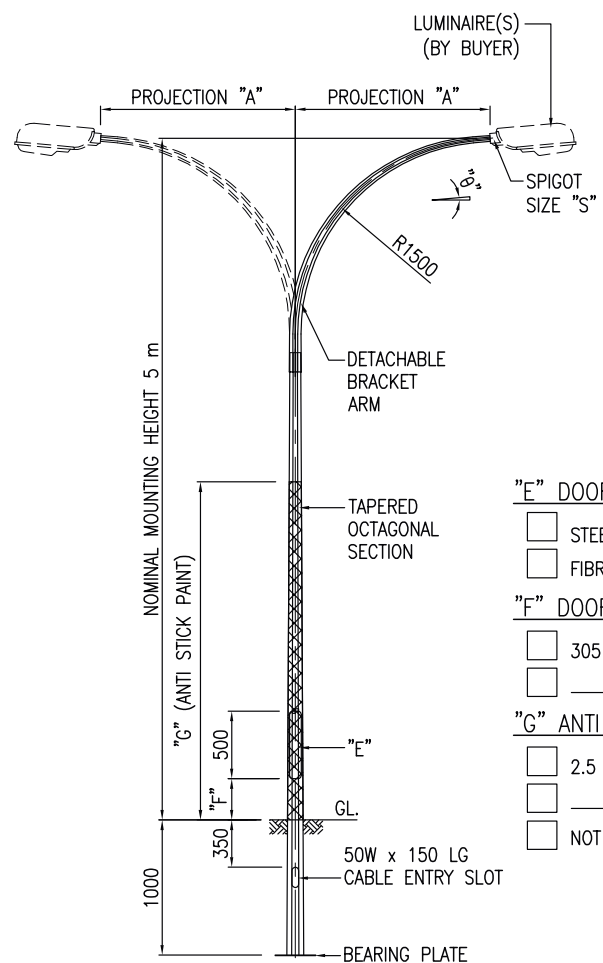
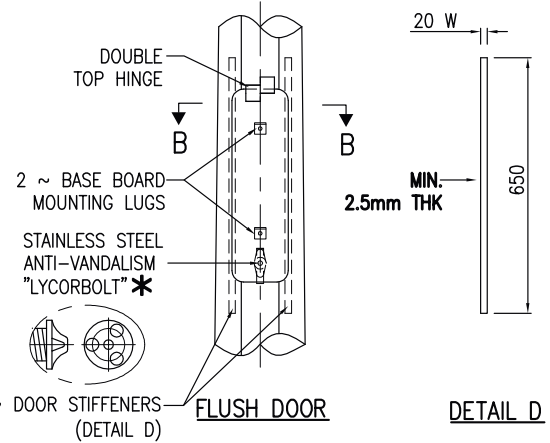
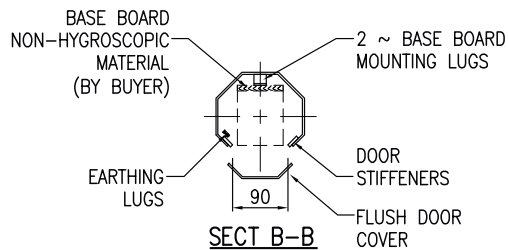
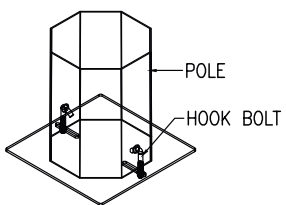


NO OF BRACKET ARM	PROJECTION "A"	SPIGOT "S"	TILT "θ"
SINGLE BRACKET ARM	1.0 m	34 φ	0°
	1.5 m	42 φ	5°
DOUBLE BRACKET ARM		48 φ	10°
		60 φ	15°



- "E" DOOR TYPE**
- STEEL
 - FIBRE WITH _____ WORDING
- "F" DOOR FROM GROUND**
- 305 mm
 - _____ mm
- "G" ANTI STICK PAINT FROM GROUND**
- 2.5 m
 - _____ m
 - NOT REQUIRED



ISOMETRIC VIEW
BASE SECTION

CUSTOMER APPROVED DRAWING
FOR MANUFACTURE

(Co. stamp, sign & date)

TECHNICAL SPECIFICATIONS

- 1) DESIGN CONDITIONS
 - 1.1 BASIC WIND SPEED : 35 m/s (BS 5649) SUPERSEDED BY BS EN 40-3-1
 - 1.2 10 MINUTES MEAN WIND VELOCITY : 20.6 m/s (BS EN 40-3-1) EQUIVALENT TO BS 5649 3-SEC GUST BASIC WIND SPEED OF 35 m/s
 - 1.3 TOTAL LUMINAIRES SAIL AREA : 0.24 m² ⚠
 - 1.4 TOTAL WEIGHT OF LUMINAIRES : 24 KG ⚠
- 2) STANDARDS
 - 2.1 POLE DESIGN : BS EN 40-3-1 & BS EN 40-3-3 EN 12767 CLASS 0
 - 2.2 MATERIAL : BS EN 10025 S275JR
 - 2.3 WELDING (ELECTRIC ARC WELDING) : BS EN 1011-2
 - 2.4 GALVANIZING : BS EN ISO 1461 / BS 729
- 3) TESTING PROCEDURES : DIMENSIONAL VERIFICATION, GALVANIZING THICKNESS, MATERIAL STRENGTH & THICKNESS TYPE TEST: BS EN 40-3-2
- 4) QUALITY CONTROL PROCEDURES : THE SUPPLIER / MANUFACTURER AND GALVANIZER SHALL BE ISO 9001 : 2015 ACCREDITED

MANUFACTURER'S COMPLIANCE

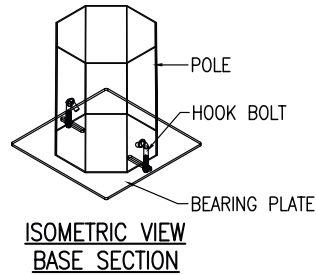
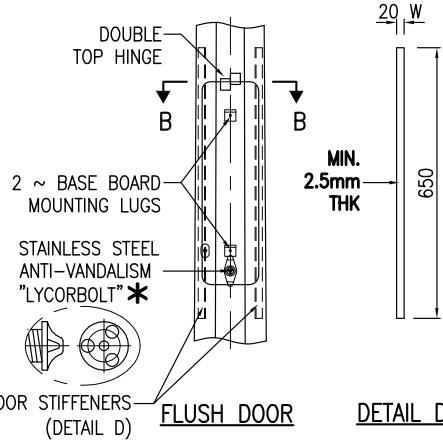
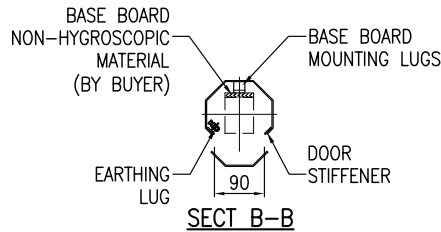
- 1) LOCALLY MANUFACTURED PRODUCTS : -MANUFACTURER'S DECLARATION THAT POLE SECTIONS AND COMPONENTS ARE "MADE IN MALAYSIA" IN COMPLIANCE TO MOF "SURAT PEKELILING PERBENDAHARAAN BIL.7 TAHUN 2002".
-HOT ROLLED STEEL COIL WITH LOCAL STEEL MILL CERTIFICATES.
- 2) MANUFACTURING AND HOT DIP GALVANIZING : -PREFERRED IN-HOUSE MANUFACTURING WITH HOT DIP GALVANIZING PROCESSES.
- 3) PROVIDE COMPULSORY TESTING AT MANUFACTURER'S FACTORY : -TYPE TEST TO BS EN 40-3-2
-GALVANIZING TEST
-MATERIAL TEST
-WELDING TEST BY DYE PENETRANT
- 4) CERTIFICATION : -JKR / ISO / SIRIM
- 5) REGISTRATION : -MITI / IKRAM / MOF / CIDB
- 6) TRACK RECORD : -EVIDENCE OF MIN. 10 YEARS MANUFACTURING & SUPPLY TRACK RECORDS.
- 7) PE ENDORSEMENT : -PE ENDORSEMENT MANDATORY FOR ALL POLE DESIGN CALCULATIONS & DRAWINGS FOR SUBMISSION.
- 8) DESIGN CALCULATION : -DESIGN CALCULATIONS INCORPORATING UNFACTORED GROUND REACTIONS SHALL BE VALIDATED, REVIEWED AND APPROVED.

* UTILITY INNOVATION APPLICATION NO : UI 2012001805

© LMSB, All Rights Reserved. This printout is copyright and shall not be reproduced without written permission from Lysaght Marketing Sdn Bhd. The Company reserves the right to make alterations to design without notice.				PRELIMINARY DRAWING FOR TENDER PURPOSES ONLY		CLIENT : PROJECT: DRAWN : SooN CHD: DATE: 30.04.15		TITLE : 5 m STREET LIGHTING COLUMN (PLANTED TYPE)		DWG./REF. NO. S050PA-006	
C	WARRANTY	TUNG LSK	07.11.18	PROJECTION		LYSAGHT MARKETING SDN BHD		SCALE : 1 : 50 SHEET 1 of 1 REV C		DIMENSIONS IN mm UNLESS STATED	
REV	DETAILS	BY	CHD	DATE	ALL DIMS ARE SUBJECT TO MANUFACTURING TOLERANCES	CO. NO.: 102382-M		This drawing and the information contained herein is the sole property of LYSAGHT MARKETING SDN BHD, is strictly confidential and must not be used or disclosed without the written consent of LYSAGHT MARKETING SDN BHD. CO. NO.: 102382-M		SHEET SIZE A4	



PROJECTION "A"	SPIGOT "S"	TILT "θ"
1.5 m	34ø OD	0°
2.0 m	42ø OD	5°
2.5 m	48ø OD	10°
3.0 m	60ø OD	15°



- "E" DOOR TYPE**
- STEEL
 - FIBRE WITH _____ WORDING
- "F" DOOR FROM GROUND**
- 500 mm
 - _____ mm
- "G" ANTI STICK PAINT FROM GROUND**
- 2.5 m
 - _____ m
 - NOT REQUIRED

PLANTING DEPTH "P"	
POLE HEIGHT	DEPTH (MM)
6.0 m	1100
7.0 m	1200

CUSTOMER APPROVED DRAWING
FOR MANUFACTURE

(Co. stamp, sign & date)

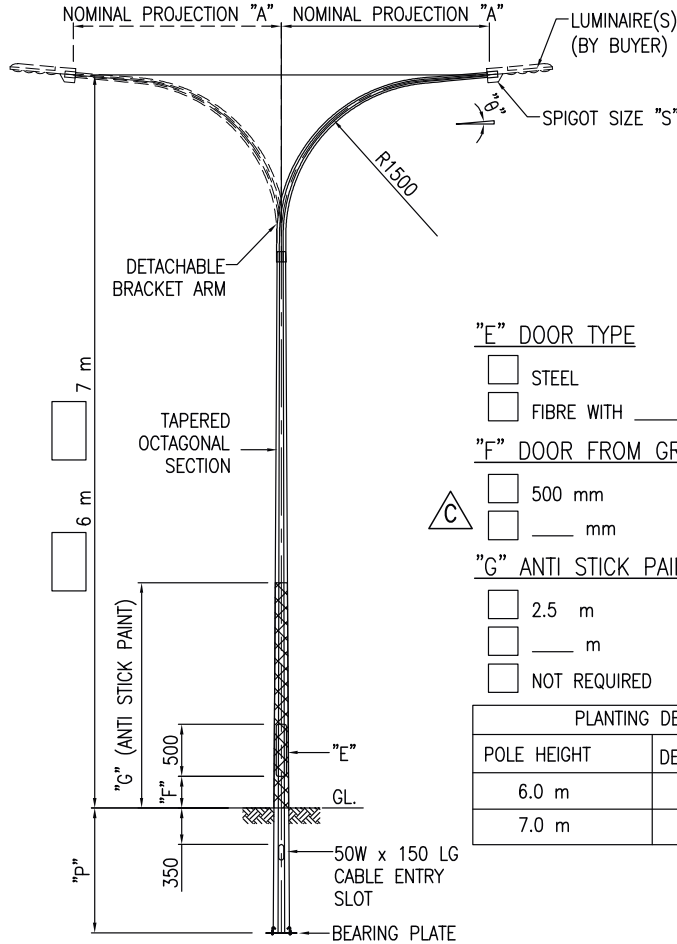
TECHNICAL SPECIFICATIONS

- 1) DESIGN CONDITIONS
 - 1.1 BASIC WIND SPEED : 35 m/s (BS 5649) SUPERSEDED BY BS EN 40-3-1
 - 1.2 10 MINUTES MEAN WIND VELOCITY : 20.6 m/s (BS EN 40-3-1) EQUIVALENT TO BS 5649 3-SEC WIND BASIC WIND SPEED OF 35 m/s
 - 1.3 TOTAL LUMINAIRES SAIL AREA : 0.24 m²
 - 1.4 TOTAL WEIGHT OF LUMINAIRES : 24 kg
- 2) STANDARDS
 - 2.1 POLE DESIGN : BS EN 40-3-1 & BS EN 40-3-3 EN 12767 CLASS 0
 - 2.2 MATERIAL : BS EN 10025 S275JR
 - 2.3 WELDING (ELECTRIC ARC WELDING) : BS EN 1011-2
 - 2.4 GALVANIZING : BS EN ISO 1461 / BS 729
- 3) TESTING PROCEDURES : DIMENSIONAL VERIFICATION, GALVANIZING THICKNESS, MATERIAL STRENGTH & THICKNESS TYPE TEST: BS EN 40-3-2
- 4) QUALITY CONTROL PROCEDURES : THE SUPPLIER / MANUFACTURER AND GALVANIZER SHALL BE ISO 9001 : 2015 ACCREDITED

MANUFACTURER'S COMPLIANCE

- 1) LOCALLY MANUFACTURED PRODUCTS : -MANUFACTURER'S DECLARATION THAT POLE SECTIONS AND COMPONENTS ARE "MADE IN MALAYSIA" IN COMPLIANCE TO MOF "SURAT PEKELILING PERBENDAHARAAN BIL.7 TAHUN 2002".
-HOT ROLLED STEEL COIL WITH LOCAL STEEL MILL CERTIFICATES.
- 2) MANUFACTURING AND HOT DIP GALVANIZING : -PREFERRED IN-HOUSE MANUFACTURING WITH HOT DIP GALVANIZING PROCESSES.
- 3) PROVIDE COMPULSORY TESTING AT MANUFACTURER'S FACTORY : -TYPE TEST TO BS EN 40-3-2
-GALVANIZING TEST
-MATERIAL TEST
-WELDING TEST BY DYE PENETRANT
- 4) CERTIFICATION : -JKR / ISO / SIRIM
- 5) REGISTRATION : -MITI / IKRAM / MOF / CIDB
- 6) TRACK RECORD : -EVIDENCE OF MIN. 10 YEARS MANUFACTURING & SUPPLY TRACK RECORDS.
- 7) PE ENDORSEMENT : -PE ENDORSEMENT MANDATORY FOR ALL POLE DESIGN CALCULATIONS & DRAWINGS FOR SUBMISSION.
- 8) DESIGN CALCULATION : -DESIGN CALCULATIONS INCORPORATING UNFACTORED GROUND REACTIONS SHALL BE VALIDATED, REVIEWED AND APPROVED.

* UTILITY INNOVATION APPLICATION NO : UI 2012001805



REV	DETAILS	BY	CHD	DATE
C	AS NOTED ABOVE	TUNG	LSK	12.12.18
B	WARRANTY	THOO	LSK	13.07.18
A	WARRANTY	THOO	LSK	01.08.16

© LMSB, All Rights Reserved. This printout is copyright and shall not be reproduced without written permission from Lysaght Marketing Sdn Bhd. The Company reserves the right to make alterations to design without notice.

PRELIMINARY DRAWING FOR TENDER PURPOSES ONLY

PROJECTION

ALL DIMS ARE SUBJECT TO MANUFACTURING TOLERANCES

CLIENT :
PROJECT :
DRAWN : SHA CHD: *Shah Sultan* DATE: 10.01.12

LYSAGHT MARKETING SDN BHD
CO. NO.: 102382-M

TITLE : 6m ~ 7m STREET LIGHTING COLUMN (PLANTED TYPE)
c/w SINGLE & DOUBLE BRACKET ARM

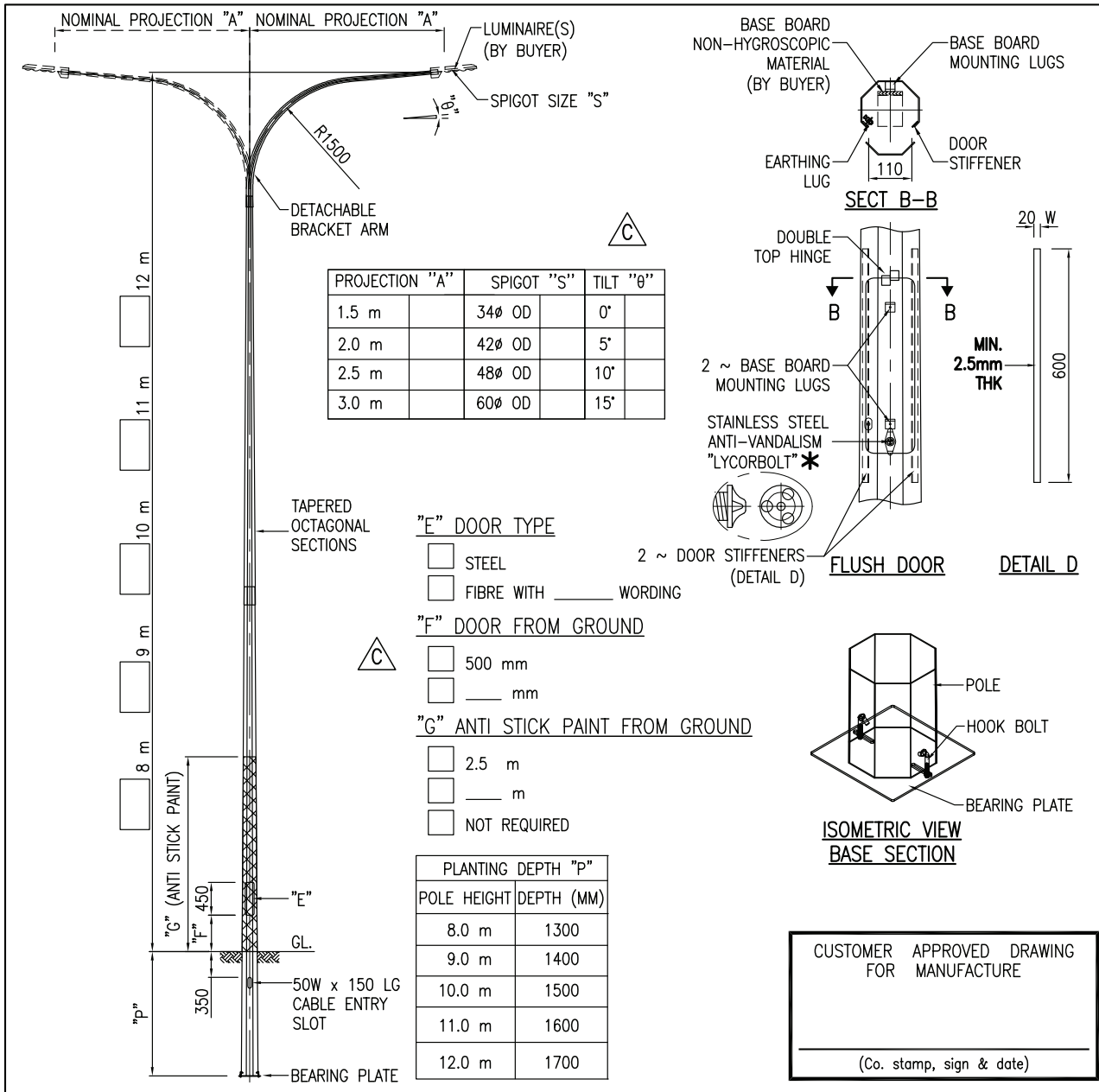
SCALE : 1 : 65 SHEET 1 of 1 REV A B C

This drawing and the information contained herein is the sole property of LYSAGHT MARKETING SDN BHD, is strictly confidential and must not be used or disclosed without the written consent of LYSAGHT MARKETING SDN BHD. CO. NO.: 102382-M

DWG./REF. NO. S060PA ~ S070PA

DIMENSIONS IN mm UNLESS STATED

SHEET SIZE A4



PROJECTION "A"	SPIGOT "S"	TILT "θ"
1.5 m	34ø OD	0°
2.0 m	42ø OD	5°
2.5 m	48ø OD	10°
3.0 m	60ø OD	15°

"E" DOOR TYPE

- STEEL
- FIBRE WITH _____ WORDING

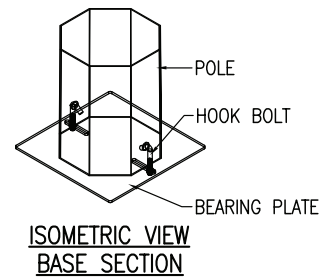
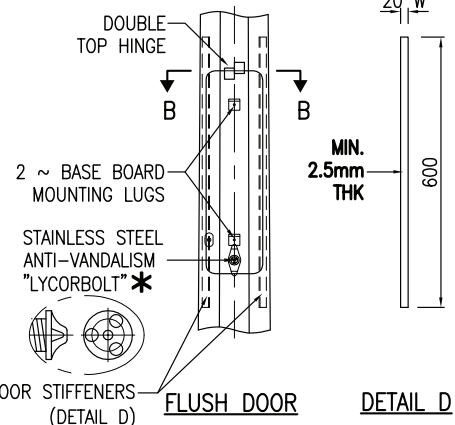
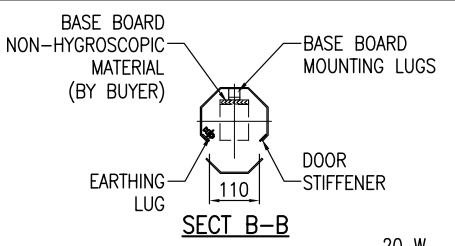
"F" DOOR FROM GROUND

- 500 mm
- _____ mm

"G" ANTI STICK PAINT FROM GROUND

- 2.5 m
- _____ m
- NOT REQUIRED

PLANTING DEPTH "P"	
POLE HEIGHT	DEPTH (MM)
8.0 m	1300
9.0 m	1400
10.0 m	1500
11.0 m	1600
12.0 m	1700



CUSTOMER APPROVED DRAWING
FOR MANUFACTURE

(Co. stamp, sign & date)

TECHNICAL SPECIFICATIONS

- 1) DESIGN CONDITIONS
 - 1.1 BASIC WIND SPEED : 35 m/s (BS 5649) SUPERSEDED BY BS EN 40-3-1
 - 1.2 10 MINUTES MEAN WIND VELOCITY : 20.6 m/s (BS EN 40-3-1) EQUIVALENT TO BS 5649 3-SEC GUST BASIC WIND SPEED OF 35 m/s
 - 1.3 TOTAL LUMINAIRES SAIL AREA : 0.24 m²
 - 1.4 TOTAL WEIGHT OF LUMINAIRES : 24 kg
- 2) STANDARDS
 - 2.1 POLE DESIGN : BS EN 40-3-1 & BS EN 40-3-3 EN 12767 CLASS 0
 - 2.2 MATERIAL : BS EN 10025 S275JR
 - 2.3 WELDING (ELECTRIC ARC WELDING) : BS EN 1011-2
 - 2.4 GALVANIZING : BS EN ISO 1461 / BS 729
- 3) TESTING PROCEDURES : DIMENSIONAL VERIFICATION, GALVANIZING THICKNESS, MATERIAL STRENGTH & THICKNESS TYPE TEST: BS EN 40-3-2
- 4) QUALITY CONTROL PROCEDURES : THE SUPPLIER / MANUFACTURER AND GALVANIZER SHALL BE ISO 9001 : 2015 ACCREDITED

MANUFACTURER'S COMPLIANCE

- 1) LOCALLY MANUFACTURED PRODUCTS : -MANUFACTURER'S DECLARATION THAT POLE SECTIONS AND COMPONENTS ARE "MADE IN MALAYSIA" IN COMPLIANCE TO MOF "SURAT PEKELILING PERBENDAHARAAN BIL.7 TAHUN 2002". -HOT ROLLED STEEL COIL WITH LOCAL STEEL MILL CERTIFICATES.
- 2) MANUFACTURING AND HOT DIP GALVANIZING : -PREFERRED IN-HOUSE MANUFACTURING WITH HOT DIP GALVANIZING PROCESSES.
- 3) PROVIDE COMPULSORY TESTING AT MANUFACTURER'S FACTORY : -TYPE TEST TO BS EN 40-3-2 -GALVANIZING TEST -MATERIAL TEST -WELDING TEST BY DYE PENETRANT
- 4) CERTIFICATION : -JKR / ISO / SIRIM
- 5) REGISTRATION : -MTI / IKRAM / MOF / CIDB
- 6) TRACK RECORD : -EVIDENCE OF MIN. 10 YEARS MANUFACTURING & SUPPLY TRACK RECORDS.
- 7) PE ENDORSEMENT : -PE ENDORSEMENT MANDATORY FOR ALL POLE DESIGN CALCULATIONS & DRAWINGS FOR SUBMISSION.
- 8) DESIGN CALCULATION : -DESIGN CALCULATIONS INCORPORATING UNFACTORED GROUND REACTIONS SHALL BE VALIDATED, REVIEWED AND APPROVED.

* UTILITY INNOVATION APPLICATION NO : UI 2012001805

© LMSB, All Rights Reserved. This printout is copyright and shall not be reproduced without written permission from Lysaght Marketing Sdn Bhd. The Company reserves the right to make alterations to design without notice.				PRELIMINARY DRAWING FOR TENDER PURPOSES ONLY		CLIENT :		TITLE : 8m ~ 12m STREET LIGHTING COLUMN (PLANTED TYPE) c/w SINGLE & DOUBLE BRACKET ARM			DWG./REF. NO.					
C	AS NOTED ABOVE	TUNG	LSK	11.12.18		PROJECT:		DRAWN : SHA			CHD: <i>Shah Sultan</i>	DATE: 10.01.12	SCALE : 1 : 80 SHEET 1 of 1 REV A B C This drawing and the information contained herein is the sole property of LYSAGHT MARKETING SDN BHD, is strictly confidential and must not be used or disclosed without the written consent of LYSAGHT MARKETING SDN BHD. CO. NO.: 102382-M	DIMENSIONS IN mm UNLESS STATED	SHEET SIZE A4	
B	WARRANTY	THOO	LSK	13.07.18		PROJECT:		DRAWN : SHA			CHD: <i>Shah Sultan</i>	DATE: 10.01.12				S080PA ~ S120PA
A	WARRANTY	THOO	LSK	01.08.16		PROJECT:		DRAWN : SHA			CHD: <i>Shah Sultan</i>	DATE: 10.01.12				
REV	DETAILS	BY	CHD	DATE	ALL DIMS ARE SUBJECT TO MANUFACTURING TOLERANCES		LYSAGHT MARKETING SDN BHD		CO. NO.: 102382-M							