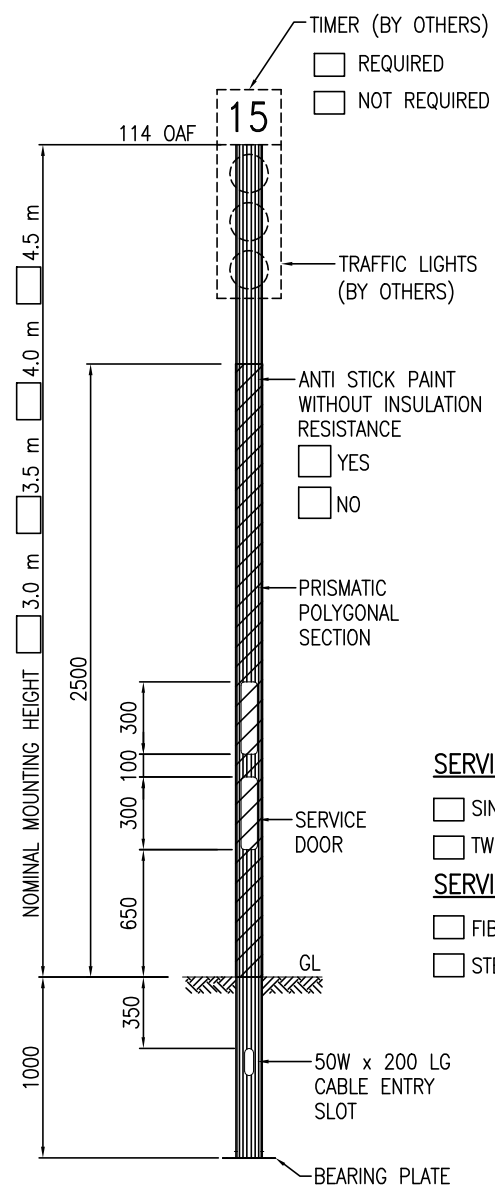


TECHNICAL SPECIFICATIONS

- 1) DESIGN CONDITIONS
 - 1.1 BASIC WIND SPEED : 35 m/s (BS 5649) SUPERSEDED BY BS EN 40-3-1
 - 1.2 FUNDAMENTAL BASIC 10 MINUTES MEAN WIND VELOCITY : 20.6 m/s (BS EN 40-3-1) EQUIVALENT TO BS 5649 3-SEC GUST BASIC WIND SPEED OF 35 m/s
- 2) STANDARDS
 - 2.1 POLE DESIGN : BS EN 40-3-1 & BS EN 40-3-3 EN 12767 CLASS 0 BS EN 40-2
 - 2.2 MATERIAL : BS EN 10025 S275JR
 - 2.3 WELDING (ELECTRIC ARC WELDING) : BS EN 1011-2
 - 2.4 GALVANIZING : BS EN ISO 1461
- 3) TESTING PROCEDURES : DIMENSIONAL VERIFICATION, GALVANIZING THICKNESS, MATERIAL STRENGTH & THICKNESS TYPE TEST: BS EN 40-3-2
- 4) QUALITY CONTROL PROCEDURES : THE SUPPLIER / MANUFACTURER AND GALVANIZER SHALL BE ISO 9001 : 2015 CERTIFIED

MANUFACTURER'S COMPLIANCE

- 1) LOCALLY MANUFACTURED PRODUCTS : -MANUFACTURER'S DECLARATION THAT POLE SECTIONS AND COMPONENTS ARE "MADE IN MALAYSIA" IN COMPLIANCE TO MOF "SURAT PEKELILING PERBENDAHARAAN BIL.7 TAHUN 2002".
 - 2) MANUFACTURING AND HOT DIP GALVANIZING : -PREFERRED IN-HOUSE MANUFACTURING WITH HOT DIP GALVANIZING PROCESSES.
 - 3) PROVIDE COMPULSORY TESTING AT MANUFACTURER'S FACTORY : -GALVANIZING TEST -MATERIAL TEST -WELDING TEST BY DYE PENETRANT -PROTOTYPE TESTING SHALL BE CARRIED OUT UNLESS WITH PRIOR VALIDATION.
 - 4) CERTIFICATION : -JKR / ISO / SIRIM
 - 5) REGISTRATION : -MITI / IKRAM / MOF / CIDB
 - 6) TRACK RECORD : -EVIDENCE OF MIN. 10 YEARS MANUFACTURING & SUPPLY TRACK RECORDS.
 - 7) PE ENDORSEMENT : -PE ENDORSEMENT MANDATORY FOR ALL POLE DESIGN CALCULATIONS & DRAWINGS FOR SUBMISSION.
 - 8) DESIGN CALCULATION : -DESIGN CALCULATIONS INCORPORATING UNFACTORED GROUND REACTIONS SHALL BE VALIDATED, REVIEWED AND APPROVED.
- * UTILITY INNOVATION GRANT NO : MY-168591-A



TIMER (BY OTHERS)
 REQUIRED
 NOT REQUIRED

TRAFFIC LIGHTS (BY OTHERS)

ANTI STICK PAINT WITHOUT INSULATION RESISTANCE
 YES
 NO

PRISMATIC POLYGONAL SECTION

SERVICE DOOR
 SINGLE
 TWIN

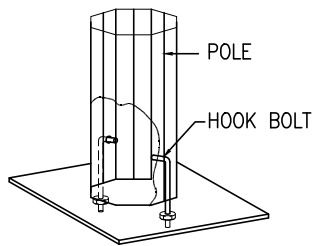
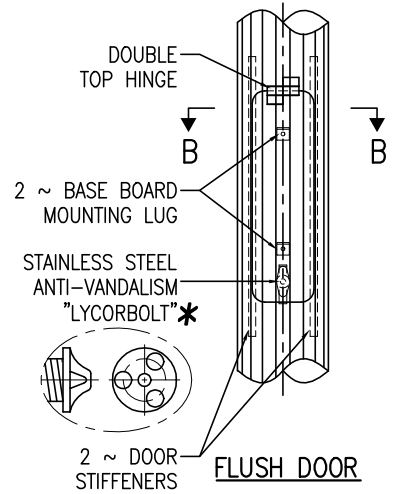
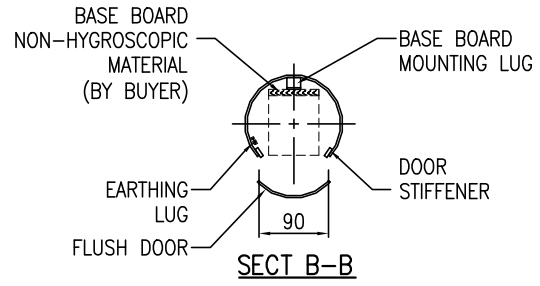
SERVICE DOOR

SERVICE DOOR COVER

FIBRE DOOR COVER
 STEEL DOOR COVER

50W x 200 LG CABLE ENTRY SLOT

BEARING PLATE



ISOMETRIC VIEW BASE SECTION

CUSTOMER APPROVED DRAWING FOR MANUFACTURE

(Co. stamp, sign & date)

© LMSB, All Rights Reserved. This printout is copyright and shall not be reproduced without written permission from Lysaght Marketing Sdn Bhd. The Company reserves the right to make alterations to design without notice.					PRELIMINARY DRAWING FOR TENDER PURPOSES ONLY					CLIENT : PROJECT : DRAWN : TUNG CHD : <i>Ch</i> DATE : 03.01.19					TITLE : <input type="checkbox"/> m PRISMATIC TRAFFIC POLE (PLANTED TYPE)					DWG./REF. NO. M23700-145									
PROJECTION					ALL DIMS ARE SUBJECT TO MANUFACTURING TOLERANCES					LYSAGHT MARKETING SDN BHD CO. NO.: 102382-M					This drawing and the information contained herein is the sole property of LYSAGHT MARKETING SDN BHD, is strictly confidential and must not be used or disclosed without the written consent of LYSAGHT MARKETING SDN BHD. CO. NO.: 102382-M					DIMENSIONS IN mm UNLESS STATED					SHEET SIZE A4				
REV	DETAILS	BY	CHD	DATE																									