

**TECHNICAL SPECIFICATIONS**

- 1) DESIGN CONDITIONS  
 1.1 BASIC WIND SPEED : 35 m/s (BS 5649) SUPERSEDED BY BS EN 40-3-1  
 1.2 10 MINUTES MEAN WIND VELOCITY : 20.6 m/s (BS EN 40-3-1) EQUIVALENT TO BS 5649 3-SEC GUST BASIC WIND SPEED OF 35 m/s

- 1.3 TOTAL TRAFFIC LIGHTS SAIL AREA : 0.3 m<sup>2</sup>  
 1.4 TOTAL WEIGHT OF TRAFFIC LIGHTS : 30 KG

- 2) STANDARDS  
 2.1 POLE DESIGN : BS EN 40-3-1 & BS EN 40-3-3 EN 12767 CLASS 0 : BS EN 10025 S275JR : BS EN 1011-2 : BS EN ISO 1461 / BS 729  
 2.2 MATERIAL : DIMENSIONAL VERIFICATION, GALVANIZING THICKNESS, MATERIAL STRENGTH & THICKNESS TYPE TEST: BS EN 40-3-2  
 2.3 WELDING (ELECTRIC ARC WELDING)  
 2.4 GALVANIZING

- 3) TESTING PROCEDURES : THE SUPPLIER / MANUFACTURER AND GALVANIZER SHALL BE ISO 9001 : 2015 ACCREDITED

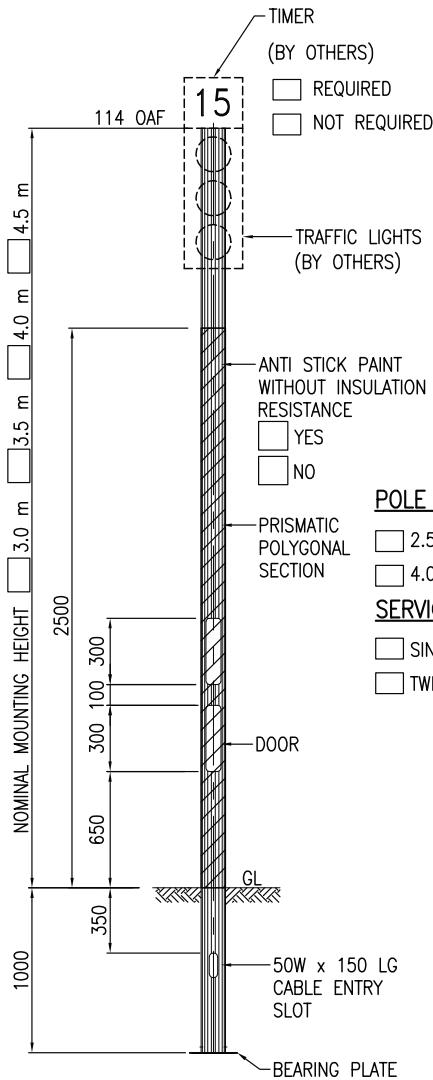
- 4) QUALITY CONTROL PROCEDURES : THE SUPPLIER / MANUFACTURER AND GALVANIZER SHALL BE ISO 9001 : 2015 ACCREDITED

**MANUFACTURER'S COMPLIANCE**

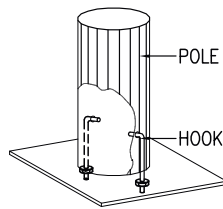
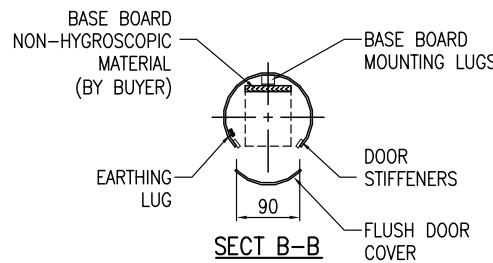
- 1) LOCALLY MANUFACTURED PRODUCTS : -MANUFACTURER'S DECLARATION THAT POLE SECTIONS AND COMPONENTS ARE "MADE IN MALAYSIA" IN COMPLIANCE TO MOF "SURAT PEKELILING PERBENDAHARAAN BIL.7 TAHUN 2002". -HOT ROLLED STEEL COIL WITH LOCAL STEEL MILL CERTIFICATES.  
 2) MANUFACTURING AND HOT DIP GALVANIZING : -PREFERED IN-HOUSE MANUFACTURING WITH HOT DIP GALVANIZING PROCESSES.  
 3) PROVIDE COMPULSORY TESTING AT MANUFACTURER'S FACTORY : -TYPE TEST TO BS EN 40-3-2 -GALVANIZING TEST -MATERIAL TEST -WELDING TEST BY DYE PENETRANT  
 4) CERTIFICATION : -JKR / ISO / SIRIM  
 5) REGISTRATION : -MITI / IKRAM / MOF / CIDB  
 6) TRACK RECORD : -EVIDENCE OF MIN. 10 YEARS MANUFACTURING & SUPPLY TRACK RECORDS.  
 7) PE ENDORSEMENT : -PE ENDORSEMENT MANDATORY FOR ALL POLE DESIGN CALCULATIONS & DRAWINGS FOR SUBMISSION.  
 8) DESIGN CALCULATION : -DESIGN CALCULATIONS INCORPORATING UNFACTORED GROUND REACTIONS SHALL BE VALIDATED, REVIEWED AND APPROVED

\* UTILITY INNOVATION APPLICATION NO : UI 2012001805

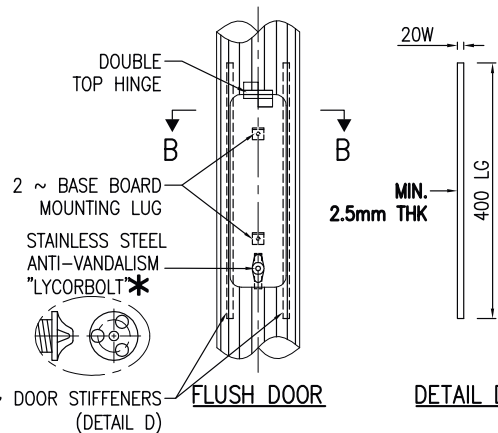
CUSTOMER APPROVED DRAWING FOR MANUFACTURE  
 \_\_\_\_\_  
 (Co. stamp, sign & date)



- POLE THICKNESS**  
 2.5 THK  
 4.0 THK  
**SERVICE DOOR**  
 SINGLE  
 TWIN



ISOMETRIC VIEW BASE SECTION



DETAIL D

WARRANTY	TUNG	LSK	07.11.18
REV	DETAILS	BY	CHD
		DATE	

© LMSB, All Rights Reserved. This printout is copyright and shall not be reproduced without written permission from Lysaght Marketing Sdn Bhd. The Company reserves the right to make alterations to design without notice.

PRELIMINARY DRAWING FOR TENDER PURPOSES ONLY  
  
 ALL DIMS ARE SUBJECT TO MANUFACTURING TOLERANCES

CLIENT :  
 PROJECT :  
 DRAWN : NIDA CHD : *Shah Han Han* DATE : 20.08.07  
**LYSAGHT MARKETING SDN BHD**  
 CO. NO. : 102382-M

TITLE : m PRISMATIC TRAFFIC POLE (PLANTED TYPE)  
 SCALE : N.T.S. SHEET 1 of 1 REV H  
 This drawing and the information contained herein is the sole property of LYSAGHT MARKETING SDN BHD, is strictly confidential and must not be used or disclosed without the written consent of LYSAGHT MARKETING SDN BHD. CO. NO.: 102382-M

DWG./REF. NO. **M23700-029**  
 DIMENSIONS IN mm UNLESS STATED  
 SHEET SIZE A4

**TECHNICAL SPECIFICATIONS**

**1) DESIGN CONDITIONS**

- 1.1 BASIC WIND SPEED : 35 m/s (BS 5649) SUPERSEDED BY BS EN 40-3-1
- 1.2 10 MINUTES MEAN WIND VELOCITY : 20.6 m/s (BS EN 40-3-1) EQUIVALENT TO BS 5649 3-SEC GUST BASIC WIND SPEED OF 35 m/s

- 1.3 TOTAL TRAFFIC LIGHTS SAIL AREA : 0.3 m<sup>2</sup>
- 1.4 TOTAL WEIGHT OF TRAFFIC LIGHTS : 30 KG

**2) STANDARDS**

- 2.1 POLE DESIGN : BS EN 40-3-1 & BS EN 40-3-3 EN 12767 CLASS 0
- 2.2 MATERIAL : BS EN 10025 S275JR
- 2.3 WELDING (ELECTRIC ARC WELDING) : BS EN 1011-2
- 2.4 GALVANIZING : BS EN ISO 1461 / BS 729

**3) TESTING PROCEDURES**

- : DIMENSIONAL VERIFICATION, GALVANIZING THICKNESS, MATERIAL STRENGTH & THICKNESS TYPE TEST: BS EN 40-3-2

**4) QUALITY CONTROL PROCEDURES**

- : THE SUPPLIER / MANUFACTURER AND GALVANIZER SHALL BE ISO 9001 : 2015 ACCREDITED

**MANUFACTURER'S COMPLIANCE**

**1) LOCALLY MANUFACTURED PRODUCTS**

- : -MANUFACTURER'S DECLARATION THAT POLE SECTIONS AND COMPONENTS ARE "MADE IN MALAYSIA" IN COMPLIANCE TO MOF "SURAT PEKELILING PERBENDAHARAAN BIL.7 TAHUN 2002".
- HOT ROLLED STEEL COIL WITH LOCAL STEEL MILL CERTIFICATES.

**2) MANUFACTURING AND HOT DIP GALVANIZING**

- : -PREFERRED IN-HOUSE MANUFACTURING WITH HOT DIP GALVANIZING PROCESSES.

**3) PROVIDE COMPULSORY TESTING AT MANUFACTURER'S FACTORY**

- : -TYPE TEST TO BS EN 40-3-2
- GALVANIZING TEST
- MATERIAL TEST
- WELDING TEST BY DYE PENETRANT

**4) CERTIFICATION**

- : -JKR / ISO / SIRIM

**5) REGISTRATION**

- : -MITI / IKRAM / MOF / CIDB

**6) TRACK RECORD**

- : -EVIDENCE OF MIN. 10 YEARS MANUFACTURING & SUPPLY TRACK RECORDS.

**7) PE ENDORSEMENT**

- : -PE ENDORSEMENT MANDATORY FOR ALL POLE DESIGN CALCULATIONS & DRAWINGS FOR SUBMISSION.

**8) DESIGN CALCULATION**

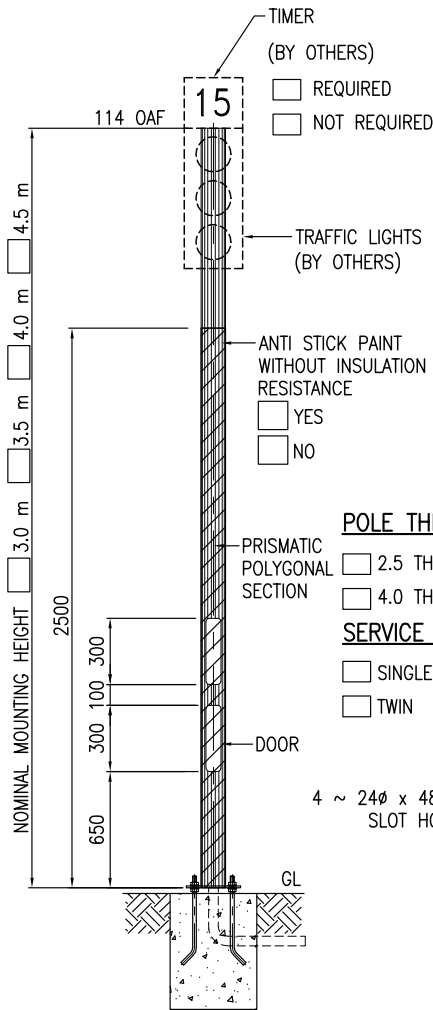
- : -DESIGN CALCULATIONS INCORPORATING UNFACTORED GROUND REACTIONS SHALL BE VALIDATED, REVIEWED AND APPROVED.



\* UTILITY INNOVATION APPLICATION NO : UI 2012001805

CUSTOMER APPROVED DRAWING  
FOR MANUFACTURE

(Co. stamp, sign & date)



- REQUIRED
- NOT REQUIRED

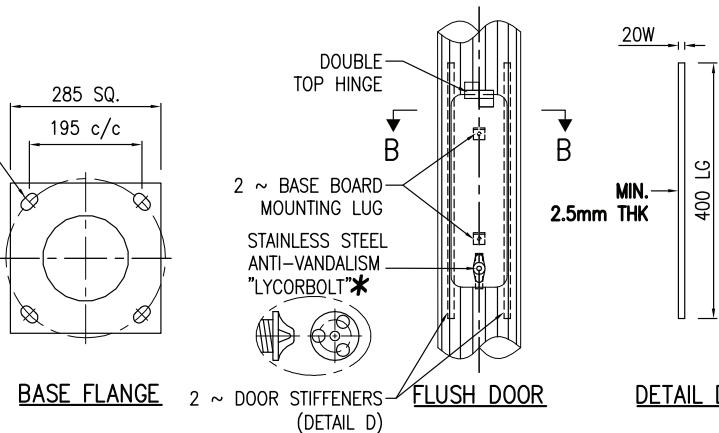
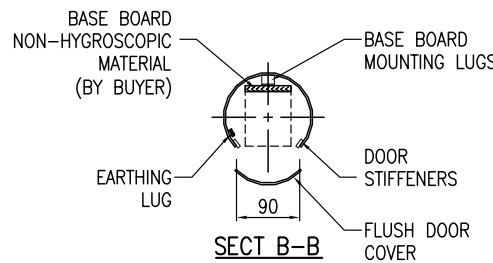
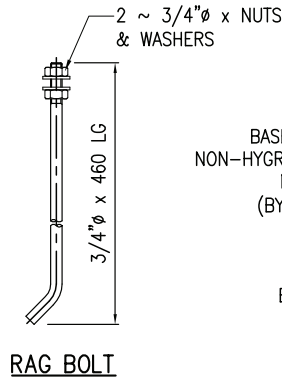
- YES
- NO

**POLE THICKNESS**

- 2.5 THK
- 4.0 THK

**SERVICE DOOR**

- SINGLE
- TWIN



C	WARRANTY	TUNG	LSK	07.11.18
REV	DETAILS	BY	CHD	DATE

© LMSB, All Rights Reserved. This printout is copyright and shall not be reproduced without written permission from Lysaght Marketing Sdn Bhd. The Company reserves the right to make alterations to design without notice.

PRELIMINARY DRAWING FOR TENDER PURPOSES ONLY

PROJECTION

ALL DIMS ARE SUBJECT TO MANUFACTURING TOLERANCES

CLIENT :  
PROJECT :  
DRAWN : 001 CHD : *Chin Han Han* DATE : 29.03.13

**LYSAGHT MARKETING SDN BHD**  
CO. NO.: 102382-M

TITLE :  m PRISMATIC TRAFFIC POLE (FLANGED TYPE)

SCALE : N.T.S. SHEET 1 of 1 REV C

This drawing and the information contained herein is the sole property of LYSAGHT MARKETING SDN BHD, is strictly confidential and must not be used or disclosed without the written consent of LYSAGHT MARKETING SDN BHD. CO. NO.: 102382-M

DWG./REF. NO. **M23700-054**

DIMENSIONS IN mm UNLESS STATED

SHEET SIZE A4