

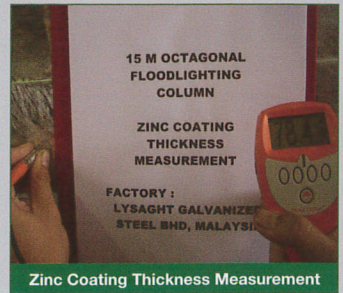
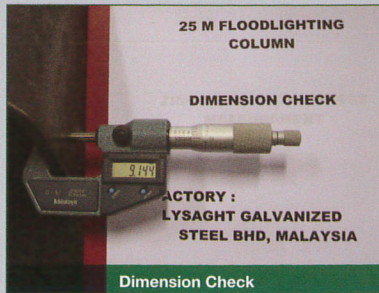
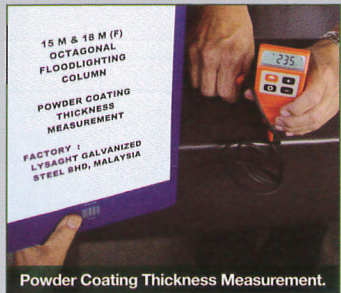
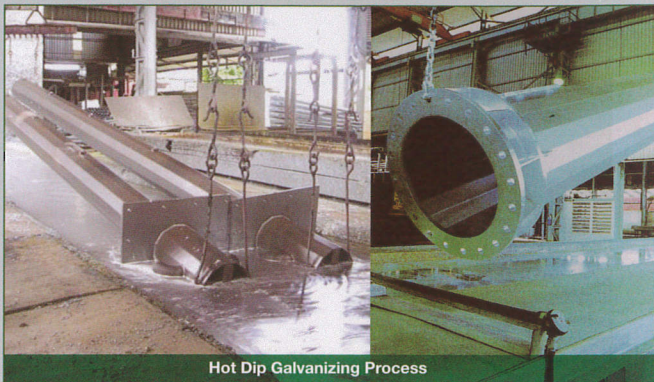
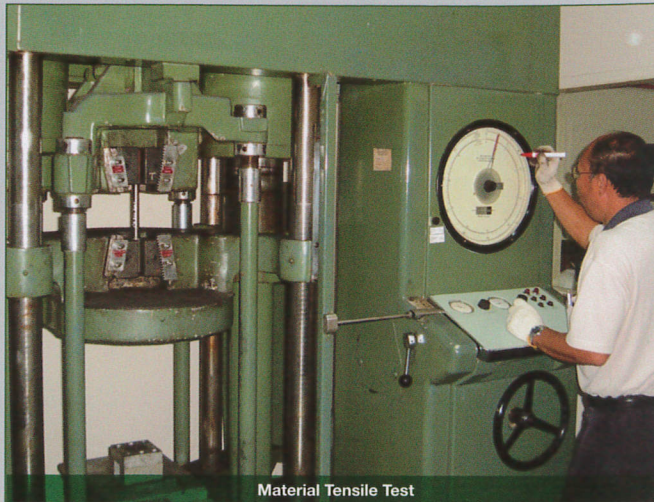
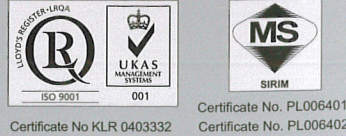
Research & Development

Quality Control Test & Inspection

Lysaght Galvanized Steel Bhd., has a core group of technical and engineering personnel, comprising experts in design, day-to-day running of the manufacturing facilities, project division for improving the efficiency and equipment, maintenance division, research and development for new products.

Lysaght Galvanized Steel Bhd., is a totally independent concern with a team of in-house design engineers ensuring that its products are suitably designed to suit a wide variety of applications to meet the varying stringent international codes and standards. Over the years, our in-house design engineers have created specifically suited software packages for design and drafting.

The company also possess the most advanced computer design software and hardware systems coupled with the state-of-the-art manufacturing facilities.



Standards

LYCORPOLE® Hot Dip Galvanized columns, masts and poles are designed and manufactured in accordance with BS EN 40, BS 6399-2, BS EN 10025, BS EN 1011-1, 2, Institution of Lighting Engineers Technical Report No. 7, AS 4100, AS 1170.2, AS 1798, AS 2979, AWS D1.1 and AASHTO Standard Specifications for Structural Supports for Highway Signs, Luminaires and Traffic Signals.

Hot Dip Galvanized to BS 729, BS EN ISO 1461, ASTM A123, ASTM A153 or AS/NZS 4680 is a standard feature. Where specified upon request, our Hot Dip Galvanized products can be enhanced with additional Powder Coating with oven baked PE-F polyester based powder to BS 6497 to withstand weather and UV resistance for anti-chalking and colour stability.

LYCORPOLE®

Inspired Design Advanced Construction



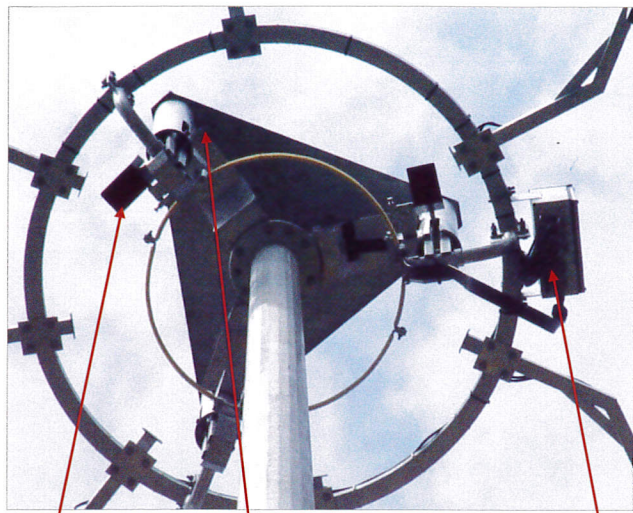
HIGH
MAST

LYSAGHT MARKETING SDN BHD (102382-M)

No. 11, Jalan Majistret U1/26, Seksyen U1, Hicom-Glenmarie Ind. Park, 40150 Shah Alam, Selangor Darul Ehsan, Malaysia.
Tel: (603) 7880 3750 Fax: (603) 7880 3720 Email: lysaght_sales@lysaghtmarketing.com.my

<p>IPOH Tel : (605) 546 8278 Fax : (605) 546 3589 Email : lysaghtipoh@lysaghtmarketing.com.my</p>	<p>SARAWAK / SABAH Tel : (603) 7880 3750 Fax : (603) 7880 3720 Email : lysaght_sales@lysaghtmarketing.com.my</p>	<p>SINGAPORE Tel : (65) 6861 7122 Fax : (65) 6862 1242 Email : lysaght@singnet.com.sg</p>
---	--	---

Head Frame



Flag Indicator Patented Latch Tail Galvanized Junction Box

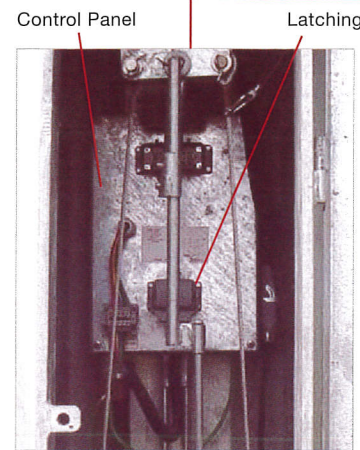
THE IDEAL CHOICE

Attractive design and versatility make LYCORPOLE® an ideal choice for a vast range of installations. Using industry-leading technology in construction, LYCORPOLE® provides technically advanced and versatile products able to meet the needs of a wide range of environments and specifications.

LYCORPOLE® High Masts use advanced technology to achieve a combination of high quality construction and design. This means longer life expectancy and minimal maintenance, with an attractive look to blend with any surrounding environment.



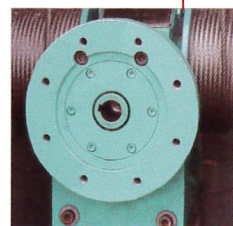
Service Door



Control Panel Latching

Point Indicator

Limit Switch



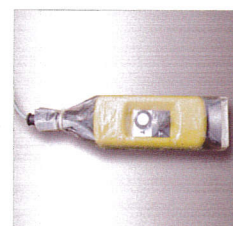
Certified Non-Slip and Self Sustaining Winch



3 Phase Motor



Electronically Factory Pre-set Control Box



Pendant Controller

Features

LYCORPOLE® High Masts range enables maintenance of luminaires to be carried out at ground level. The carriage is designed around a three-point suspension system for stability and is raised and lowered by either a manual or solid state electrically controlled winch with safety devices.

LYCORPOLE® High Masts incorporate a patented self-latching system which secures the ring in position at mast-top, removing all stress from the stainless steel wire ropes. This provides a secure and long service life for the High Mast. Taller masts can be custom designed on request.



High Court, Jalan Duta, Kuala Lumpur



Water Front, Terengganu



Singapore Polytechnic Stadium



MPPJ Football Field, Petaling Jaya, Selangor

LYCORPOLE® High Masts Columns with a combination of durability, aesthetic appeal and ease of servicing the luminaires are a popular choice for a large number of major freeways, seaports, airports, sport fields and open ground.

LYCORPOLE® High Masts is manufactured to suit variable quantities of floodlights. The arrangement of the floodlights can be asymmetrical, uni-directional or flat. Headframe can be designed to suit the lighting requirement.

The computer controlled design and manufacturing process of LYCORPOLE® ensure a consistent and high quality finished product. Smooth uniform taper from base to top - whatever the height - means a more attractive and better designed columns and masts.

Both multi-faceted and round tapered steel poles are carefully engineered to ensure maximum strength while remaining lightweight and hot-dip galvanizing ensure a long and durable service life.



North Port, Selangor



North Port, Selangor



Container Terminal 4, Westport, Selangor